

RayWhite®

TOUMA TAYLOR

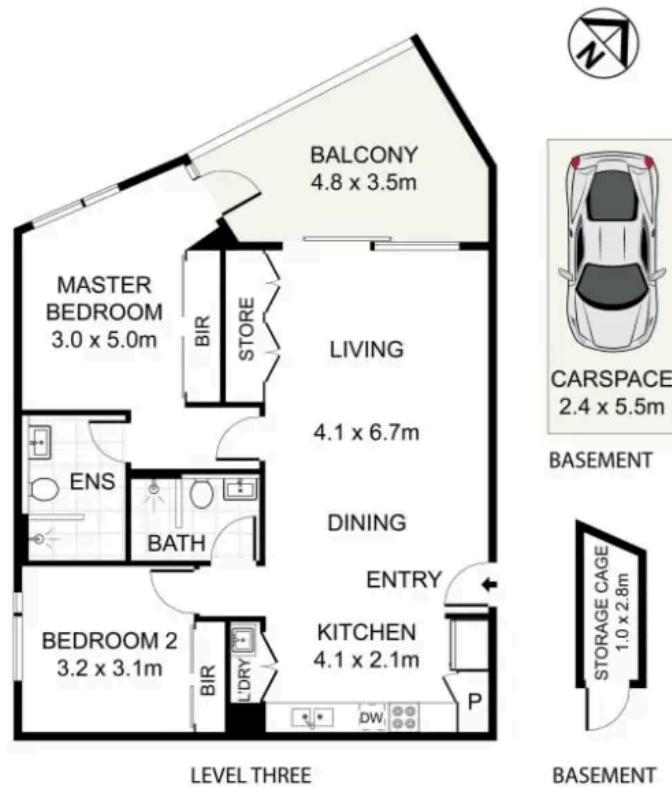


**Luxury Lifestyle Abode In Ultra Convenient
Locale**

318/153 Mitchell Road, Erskineville

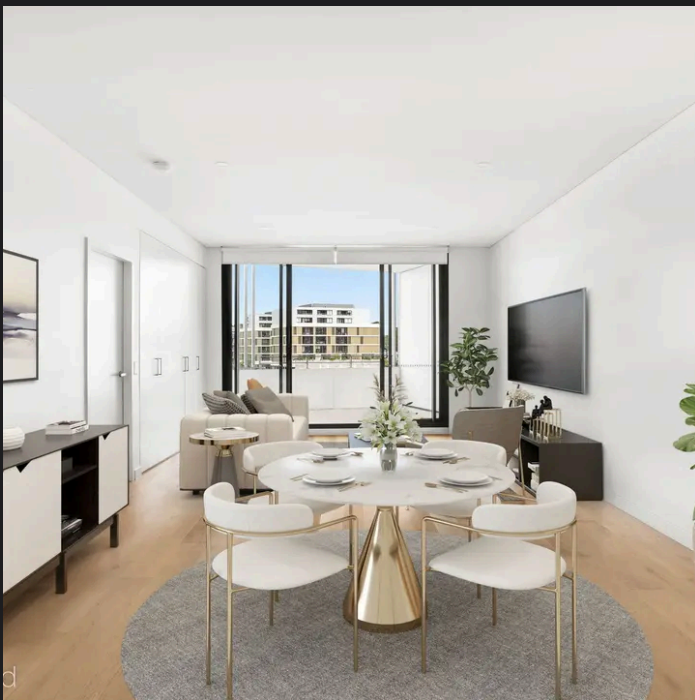
2 bed 2 bath 1 car

Sold



318/153 Mitchell Road, Erskineville

DISCLAIMER: PLANS SHOWN ARE FOR PRESENTATION PURPOSES AND ARE NOT PART OF ANY LEGAL DOCUMENT. ALL MEASUREMENTS AND FIGURES ARE APPROXIMATE.



Roger Wardy 0481 355 493
 roger.wardy@raywhite.com

Disclaimer: All information provided is sourced from what we believe to be reliable sources. However, we do not guarantee its accuracy, and interested parties should conduct their own enquiries. Scale in metres. Indicative only. Dimensions are approximate.