

RayWhite®

TOUMA TAYLOR

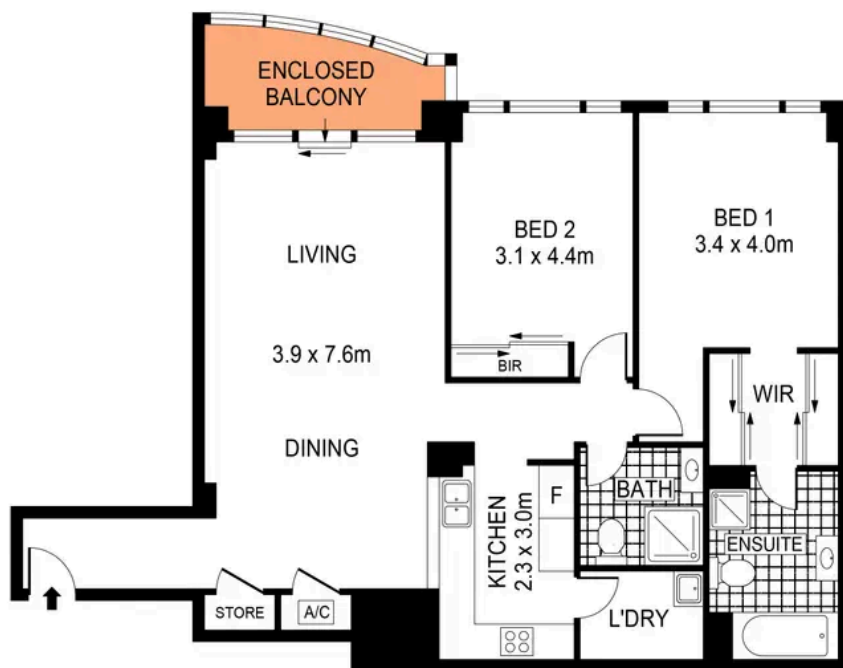


**Lifestyle Sanctuary with Golf Course Views
in Prized Complex**

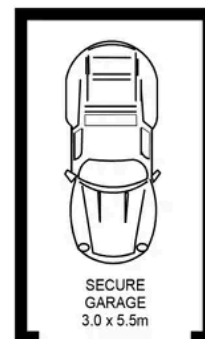
320/83-93 Dalmeny Avenue, Rosebery

2 bed 2 bath 1 car

Sold



LEVEL SIX



GROUND LEVEL

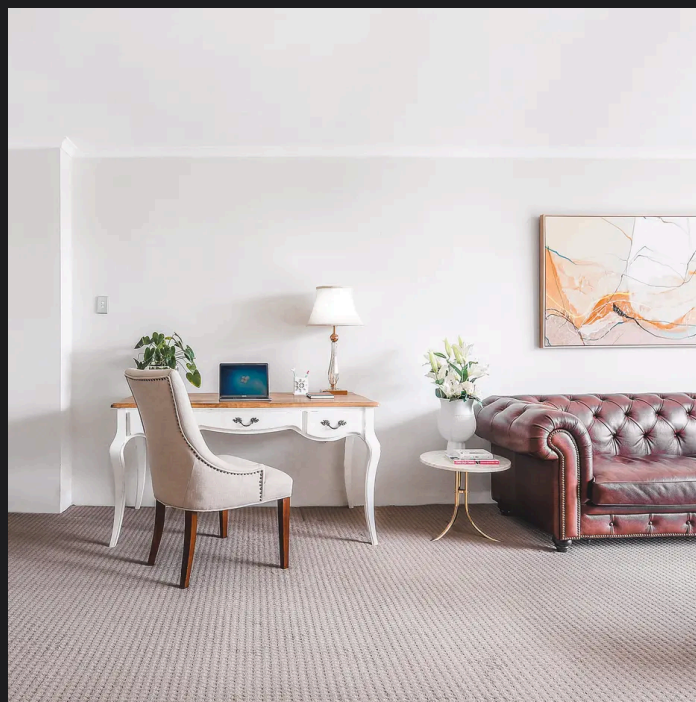


PLANS SHOWN ONLY INDICATIVE OF LAYOUT. DIMENSIONS ARE APPROXIMATE.
Ref. No: 94055



320/83-93 DALMENY AVENUE

ROSEBERY



Max Klimenko 0425 336 555
max.klimenko@raywhite.com

Disclaimer: All information provided is sourced from what we believe to be reliable sources. However, we do not guarantee its accuracy, and interested parties should conduct their own enquiries. Scale in metres. Indicative only. Dimensions are approximate.