

RayWhite®

TOUMA TAYLOR

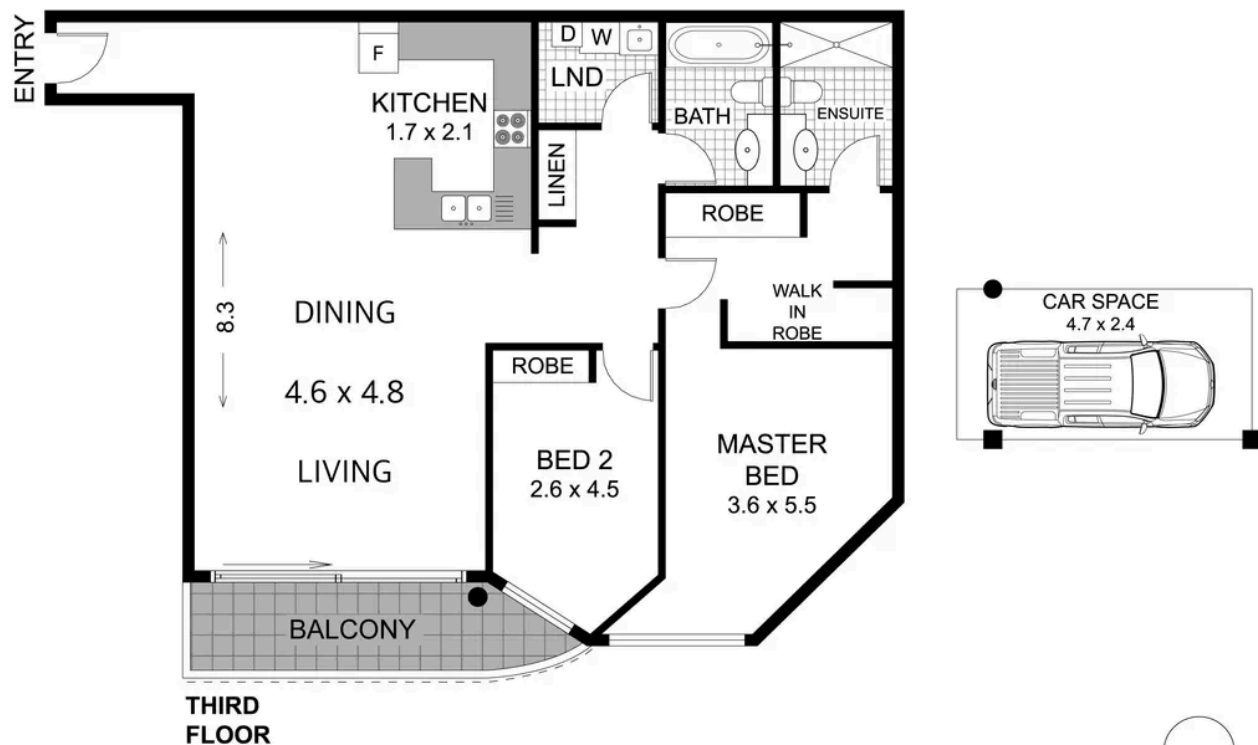


Spacious, north-facing apartment in select complex

3309/177-219 Mitchell Road, Erskineville

2 bed 2 bath 1 car

Sold



0 1 2 3 4

3309/177 MITCHELL ROAD

ERSKINEVILLE

RAY WHITE TAYLOR & PARTNERS

2 Bedroom, 2 Bathroom, 1 Car

Apartment area (approx.) 104sqm

Carspace area (approx.) 14sqm

Total area (approx.) 118sqm

RayWhite.

PLEASE NOTE: WHILST RAY WHITE TAKES EVERY CARE IN THE PURSUIT OF ACCURACY, THE PLAN IS SHOWN FOR GENERAL GUIDANCE ONLY. ALL AREAS, MEASUREMENTS AND DISTANCES ARE APPROXIMATE AND NOT TO SCALE. RAY WHITE AND OUR VENDOR WILL ACCEPT NO RESPONSIBILITY FOR ITS ACCURACY. INTERESTED PARTIES ARE ADVISED TO MAKE THEIR OWN INDEPENDENT ENQUIRIES



Walter Burfitt-Williams 0402 833 566

walter.bw@raywhite.com

Disclaimer: All information provided is sourced from what we believe to be reliable sources. However, we do not guarantee its accuracy, and interested parties should conduct their own enquiries. Scale in metres. Indicative only. Dimensions are approximate.