

# **RayWhite®**

TOUMA TAYLOR



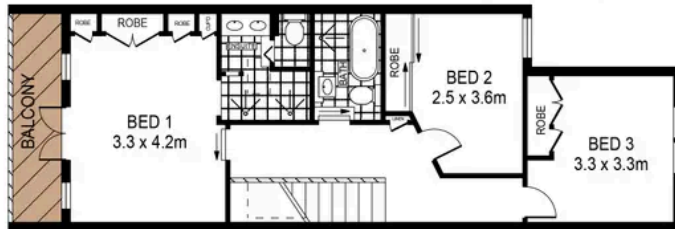
**Flawless Designer Terrace, Premium  
Finishes, Quiet Cul-De-Sac**

337 Belmont Street, Alexandria

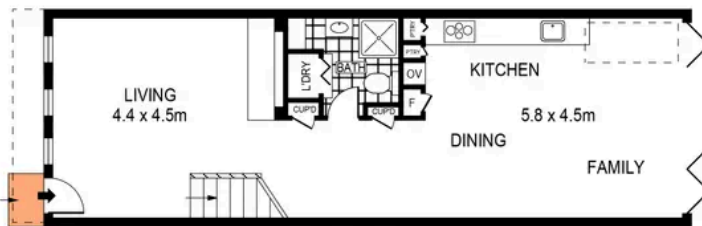
3 bed 3 bath 1 car

**Sold**

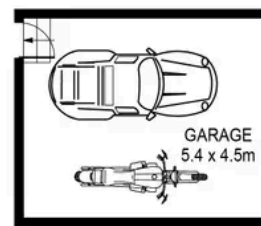




LEVEL ONE



ENTRY LEVEL



SCALE (METRES)

PLANS SHOWN ONLY INDICATIVE OF LAYOUT. DIMENSIONS ARE APPROXIMATE.  
Ref. No: 108100

337 BELMONT STREET

ALEXANDRIA



**Hayden Richards 0414 872 784**  
hayden.richards@raywhite.com

**Disclaimer:** All information provided is sourced from what we believe to be reliable sources. However, we do not guarantee its accuracy, and interested parties should conduct their own enquiries. Scale in metres. Indicative only. Dimensions are approximate.