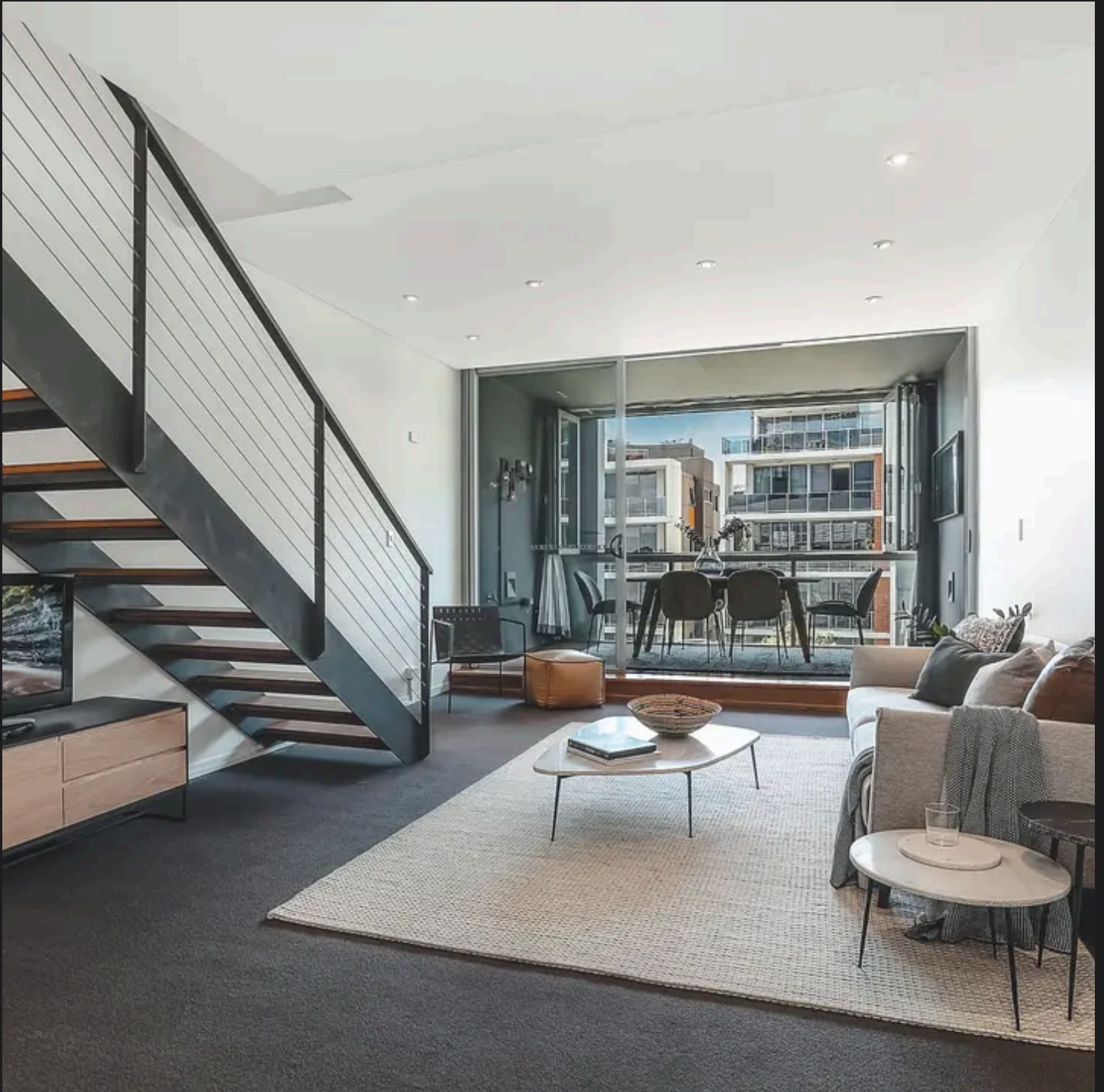


RayWhite®

TOUMA TAYLOR

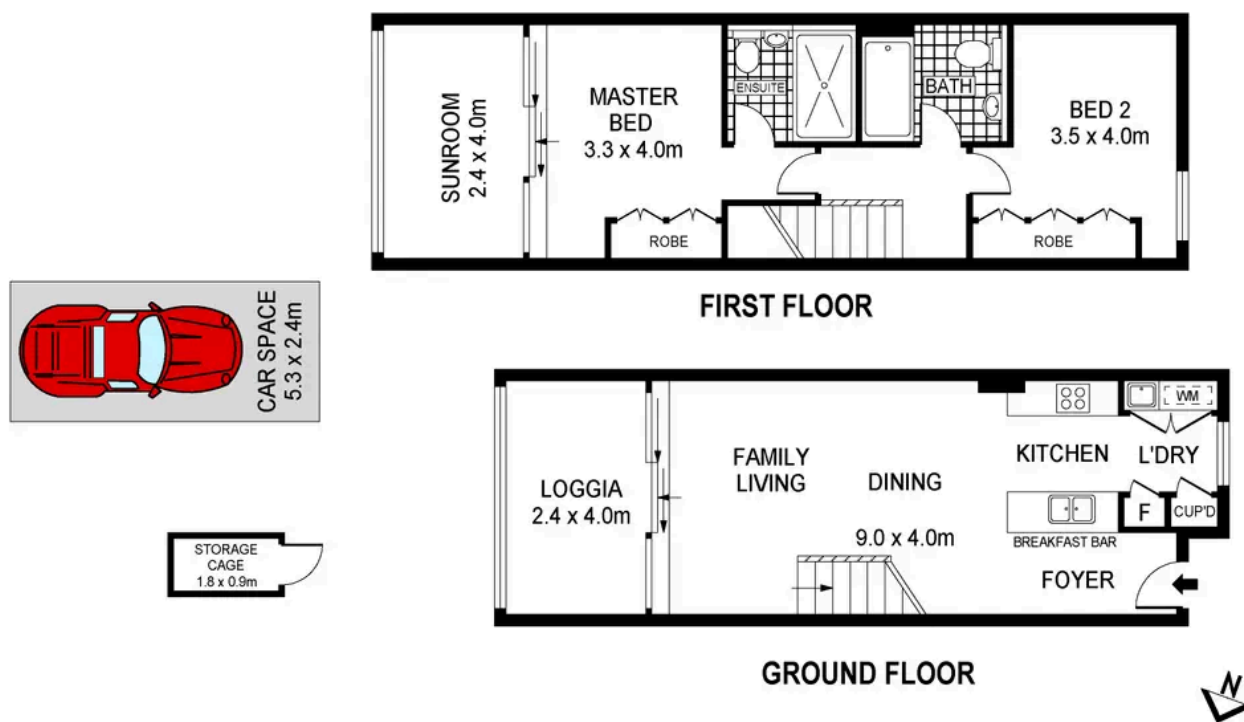


**Striking Architectural Apartment in Prized
'Coda' Complex**

33A/29-33 Epsom Road, Rosebery

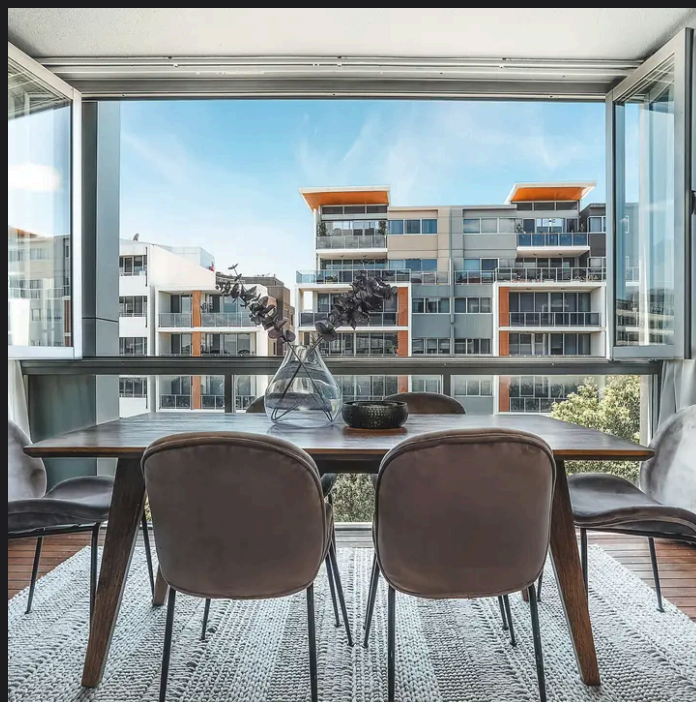
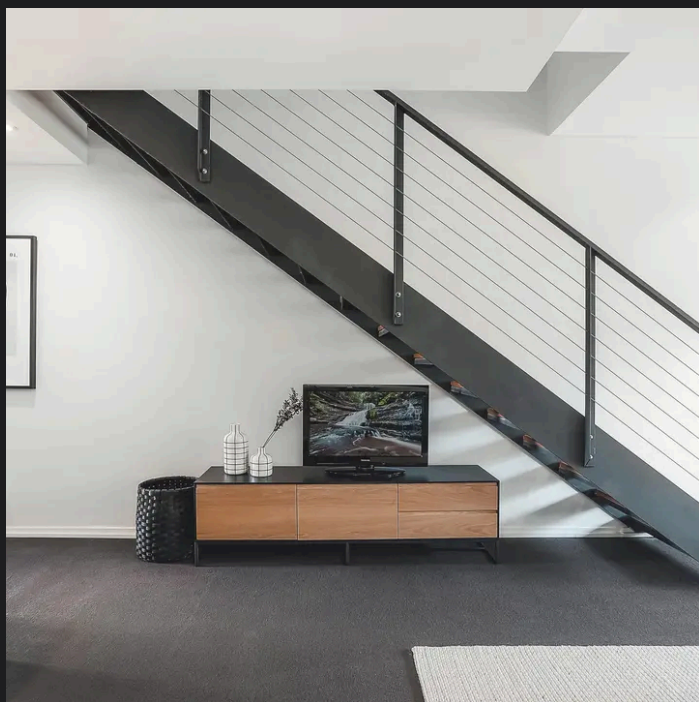
2 bed 2 bath 1 car

Sold



33A/29/33 EPSOM ROAD

ROSEBERY



Max Klimenko 0425 336 555
max.klimenko@raywhite.com

Disclaimer: All information provided is sourced from what we believe to be reliable sources. However, we do not guarantee its accuracy, and interested parties should conduct their own enquiries. Scale in metres. Indicative only. Dimensions are approximate.