

RayWhite[®]

TOUMA TAYLOR



**North Facing Top Floor Apartment Bathed
In Sunshine**

3/4-6 Cowper Street, Randwick

2 bed 1 bath 1 car

Sold



0 1 2 3 4 5
SCALE (METRES)

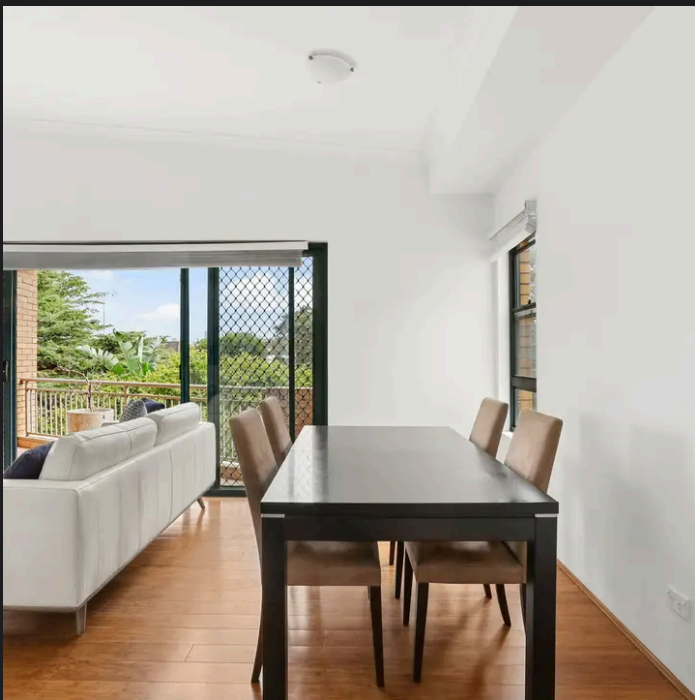
PLANS SHOWN ONLY INDICATIVE OF LAYOUT. DIMENSIONS ARE APPROXIMATE.
Ref. No. 04442

APPROX. INTERNAL SIZE 76m²
TOTAL LOT SIZE : 92m²



3/4-6 COWPER STREET

RANDWICK



Jesse Petersen 0404197940
jesse.petersen@raywhite.com

Roger Wardy 0481 355 493
roger.wardy@raywhite.com

Disclaimer: All information provided is sourced from what we believe to be reliable sources. However, we do not guarantee its accuracy, and interested parties should conduct their own enquiries. Scale in metres. Indicative only. Dimensions are approximate.