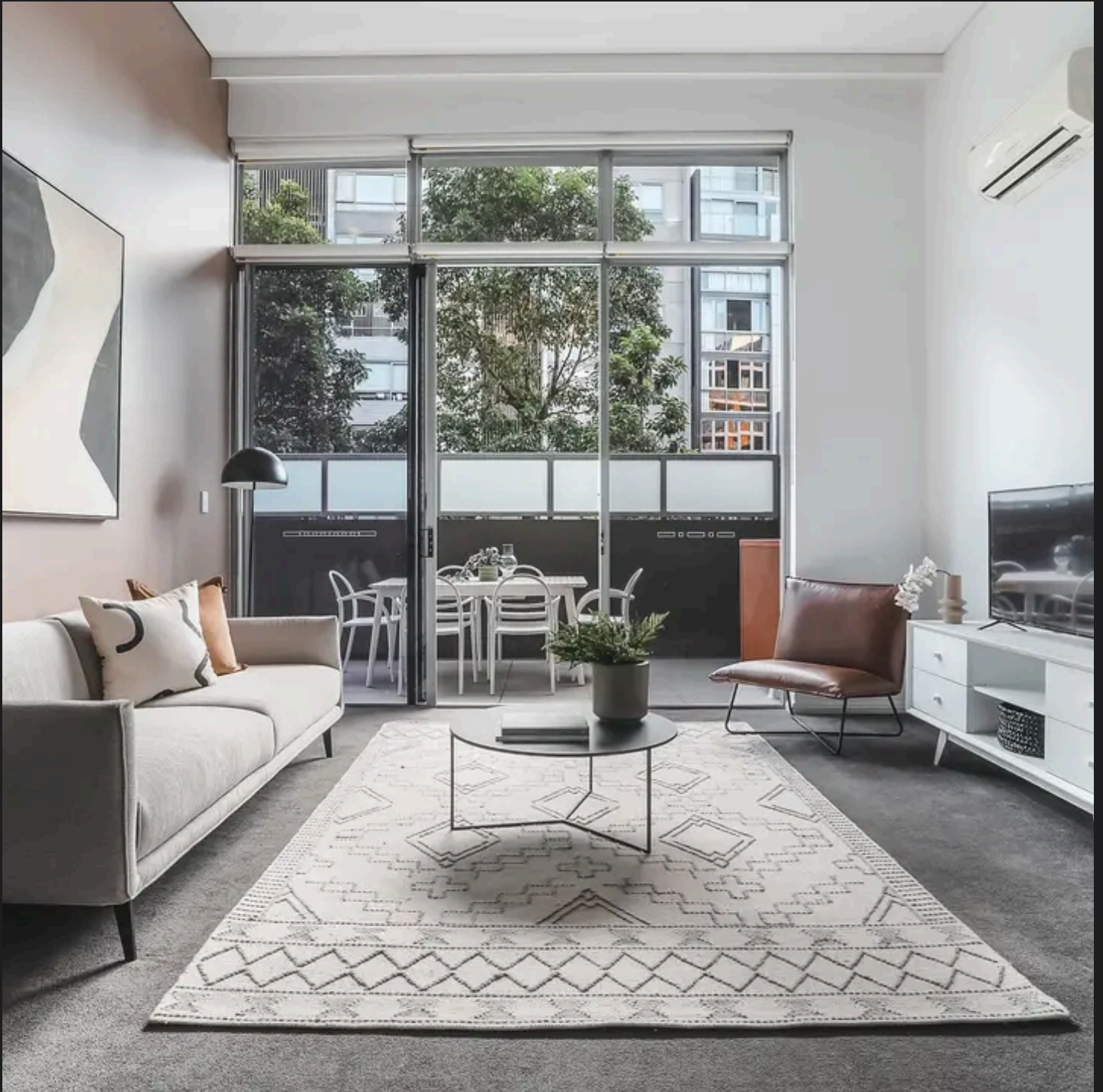


# RayWhite®

TOUMA TAYLOR



**Brilliant Courtyard Apartment of Size &  
Substance**

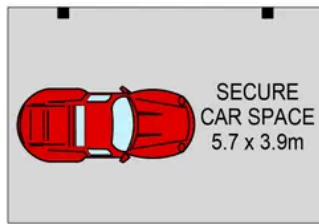
348/5 Rothschild Avenue, Rosebery

2 bed 2 bath 1 car

**Sold**

STREET  
ACCESS

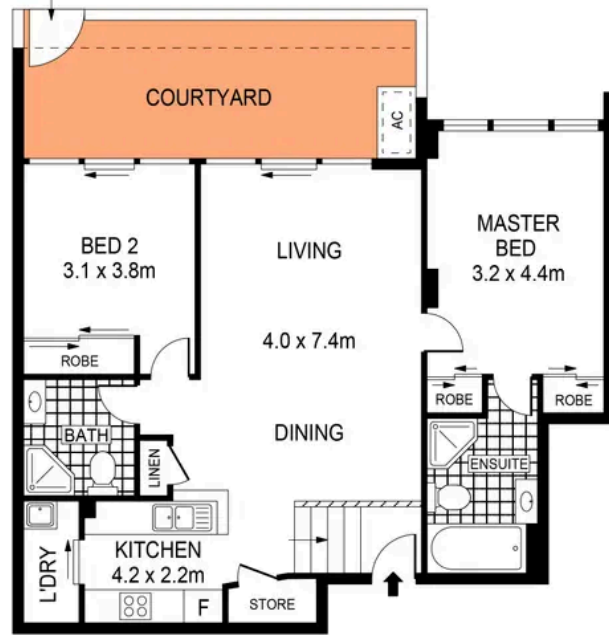
STORAGE  
CAGE  
2SQM



BASEMENT

0 1 2 3 4 5  
SCALE (METRES)

PLANS SHOWN ONLY INDICATIVE OF LAYOUT. DIMENSIONS ARE APPROXIMATE.  
Ref. No: 96940



GROUND LEVEL



RayWhite

348/5 ROTHSCILD AVENUE

ROSEBERY



Max Klimenko 0425 336 555  
max.klimenko@raywhite.com

**Disclaimer:** All information provided is sourced from what we believe to be reliable sources. However, we do not guarantee its accuracy, and interested parties should conduct their own enquiries. Scale in metres. Indicative only. Dimensions are approximate.