

# **RayWhite**<sup>®</sup>

TOUMA TAYLOR



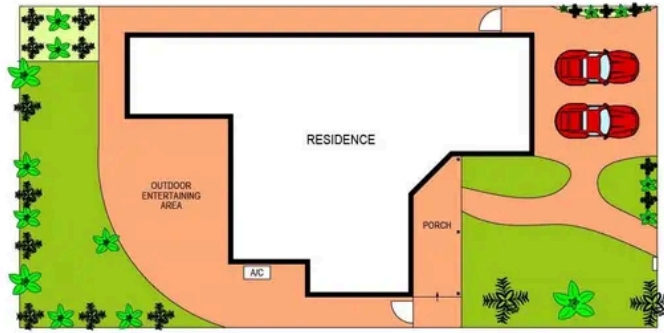
**Freestanding Family Home on Large Block  
in Quiet Street**

35 Wynnstay Avenue, Enfield

5 bed 3 bath 4 car

**Sold**

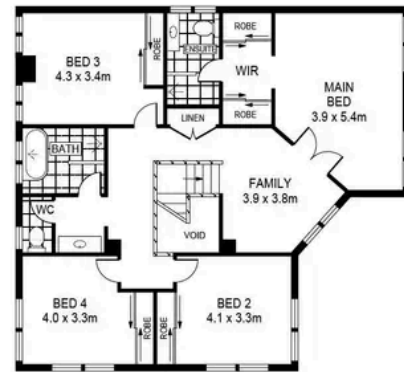




SITE PLAN  
(NOT TO SCALE)



GROUND FLOOR



UPPER FLOOR

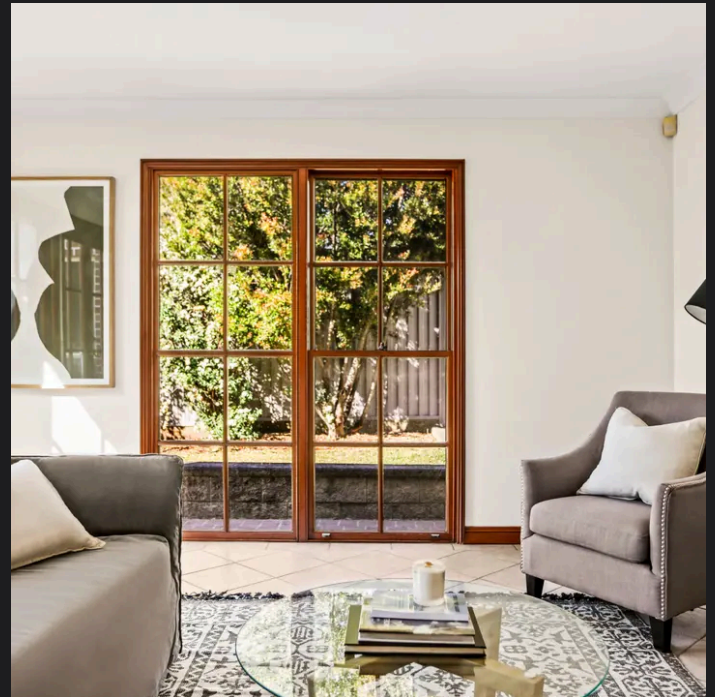
SCALE (METRES)

PLANS SHOWN ONLY INDICATIVE OF LAYOUT. DIMENSIONS ARE APPROXIMATE.  
Ref. No. 105696



35 WYNNSTAY AVENUE

ENFIELD



**Hayden Richards 0414 872 784**  
hayden.richards@raywhite.com

**Disclaimer:** All information provided is sourced from what we believe to be reliable sources. However, we do not guarantee its accuracy, and interested parties should conduct their own enquiries. Scale in metres. Indicative only. Dimensions are approximate.