

RayWhite®

TOUMA TAYLOR



**Exceptional terrace living on oversized
160sqm block**

354 Riley Street, Surry Hills

3 bed 1 bath 1 car

Sold



SITE PLAN
(NOT TO SCALE)



FIRST FLOOR



GROUND FLOOR

0 1 2 3 4 5
SCALE (METRES)

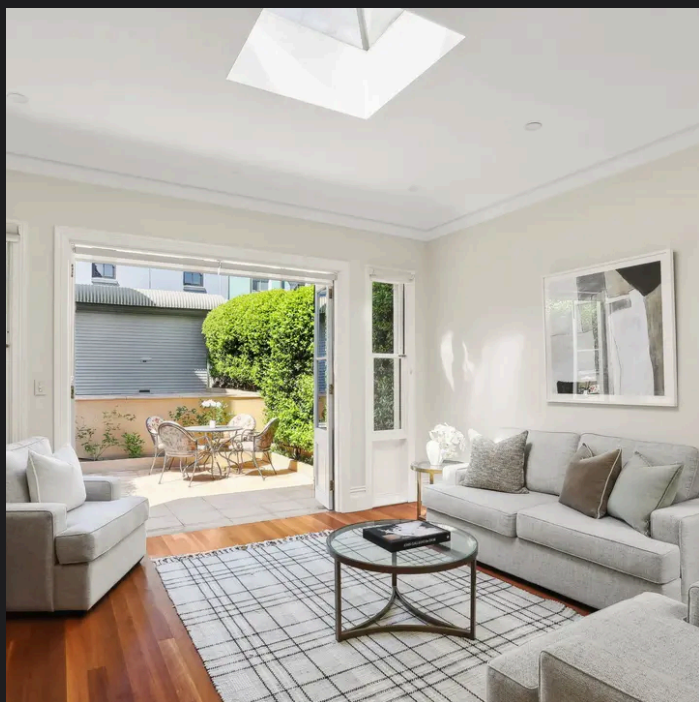
PLANS SHOWN ONLY INDICATIVE OF LAYOUT. DIMENSIONS ARE APPROXIMATE.
Ref. No: 01602

APPROX. INTERNAL AREA : 131m²



354 RILEY STREET

SURRY HILLS



Walter Burfitt-Williams 0402 833 566
walter.bw@raywhite.com

Dalton Stewart 0458 668 119
dalton.stewart@raywhite.com

Disclaimer: All information provided is sourced from what we believe to be reliable sources. However, we do not guarantee its accuracy, and interested parties should conduct their own enquiries. Scale in metres. Indicative only. Dimensions are approximate.