

RayWhite®

TOUMA TAYLOR

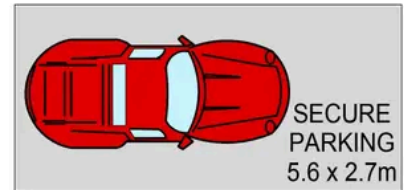
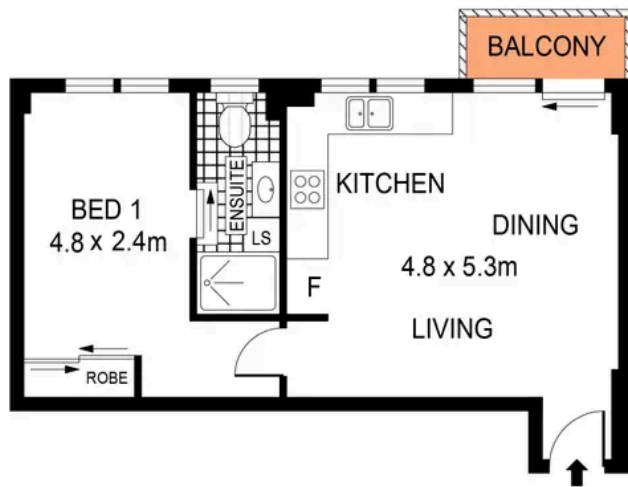


**Newly Renovated, Chic North Facing Urban
Haven in Prime Lifestyle Location**

35/679 Bourke Street, Surry Hills

1 bed 1 bath 1 car

Sold



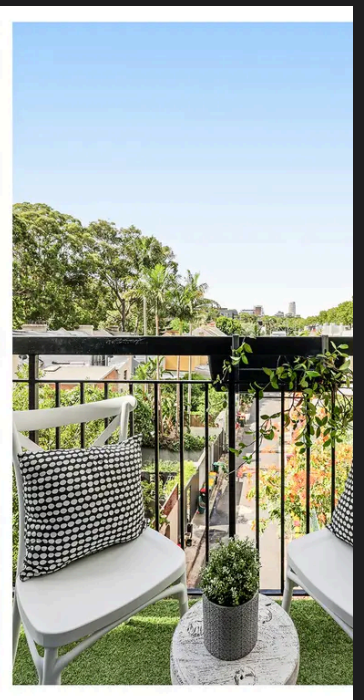
PLANS SHOWN ONLY INDICATIVE OF LAYOUT. DIMENSIONS ARE APPROXIMATE.
Ref. No: 107356

Total Size: 59sqm approx.



35/679 BOURKE STREET

SURRY HILLS



Hayden Richards 0414 872 784
hayden.richards@raywhite.com

Disclaimer: All information provided is sourced from what we believe to be reliable sources. However, we do not guarantee its accuracy, and interested parties should conduct their own enquiries. Scale in metres. Indicative only. Dimensions are approximate.