

RayWhite[®]

TOUMA TAYLOR

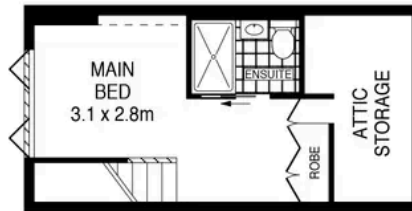


**Wonderful Home with a Stylishly Elegant
Persona**

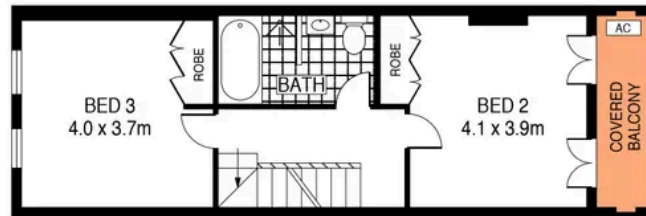
358 Riley Street, Surry Hills

3 bed 2 bath

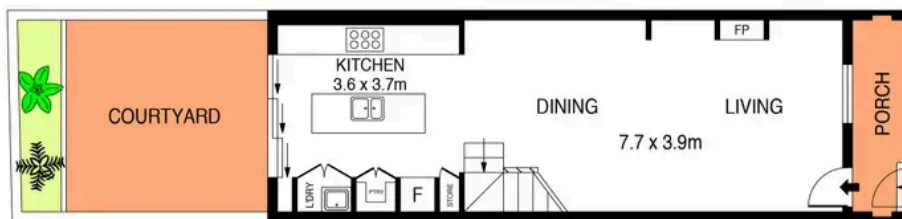
Sold



SECOND FLOOR



FIRST FLOOR



GROUND FLOOR

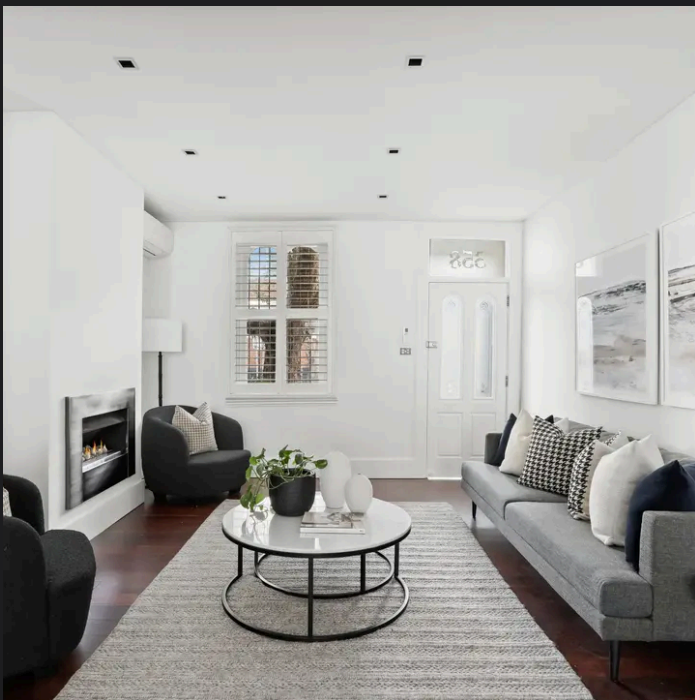
0 1 2 3 4 5
SCALE (METRES)

PLANS SHOWN ONLY INDICATIVE OF LAYOUT. DIMENSIONS ARE APPROXIMATE.
Ref. No: 105499



358 RILEY STREET

SURRY HILLS



Charles Touma 0425 305 455
charles.touma@raywhite.com

Cadan Hickey 0404 206 240
cadan_hickey@raywhite.com

Disclaimer: All information provided is sourced from what we believe to be reliable sources. However, we do not guarantee its accuracy, and interested parties should conduct their own enquiries. Scale in metres. Indicative only. Dimensions are approximate.