

# **RayWhite®**

TOUMA TAYLOR



**North-Facing Semi with Scope to Reinstate  
Second Bedroom**

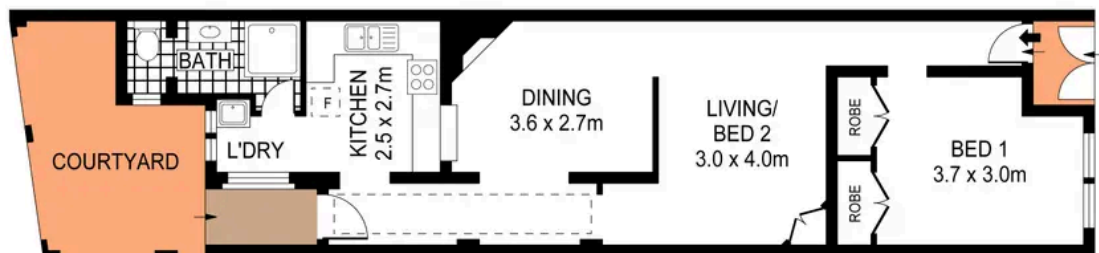
36 Rainford Street, Surry Hills

1 bed 1 bath

**Sold**



**SITE PLAN**  
(NOT TO SCALE)



0 1 2 3 4 5 **SCALE (METRES)**

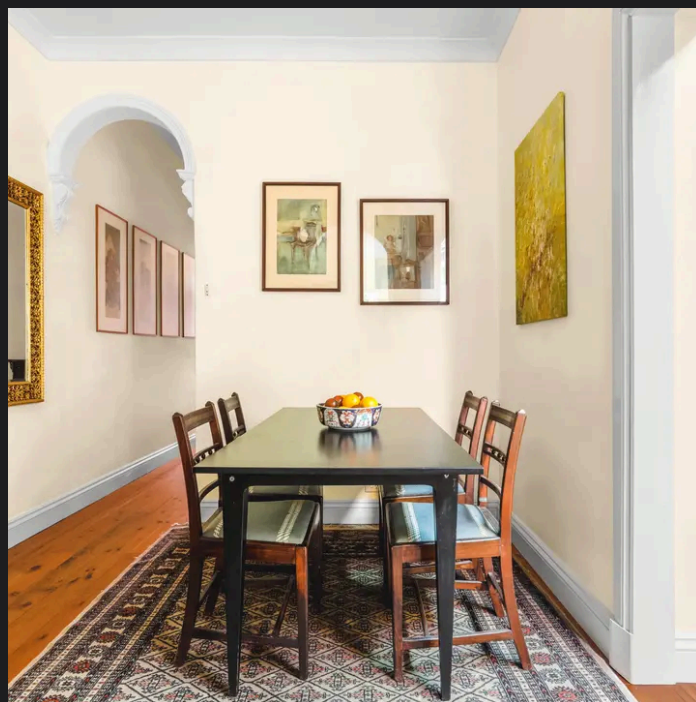
PLANS SHOWN ONLY INDICATIVE OF LAYOUT. DIMENSIONS ARE APPROXIMATE.  
Ref. No: 101514

LAND SIZE : 83m<sup>2</sup>



**36 RAINFORD STREET**

**SURRY HILLS**



**Charles Tuma 0425 305 455**  
charles.tuma@raywhite.com

**Disclaimer:** All information provided is sourced from what we believe to be reliable sources. However, we do not guarantee its accuracy, and interested parties should conduct their own enquiries. Scale in metres. Indicative only. Dimensions are approximate.