

RayWhite®

TOUMA TAYLOR



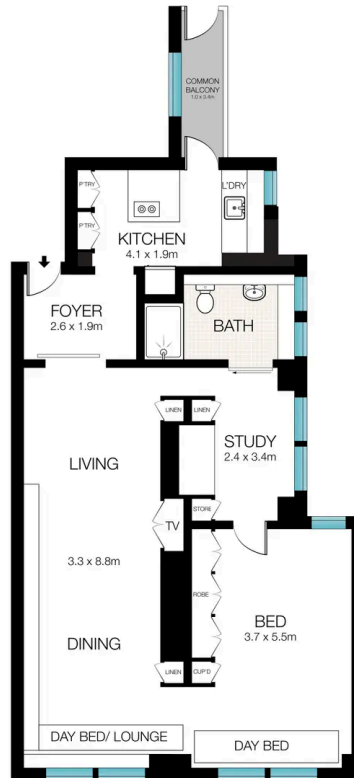
**Expansive 90sqm, 8th Floor 'Franconia'
Apartment**

37/123-125 Macleay Street, Potts Point

1 bed 1 bath

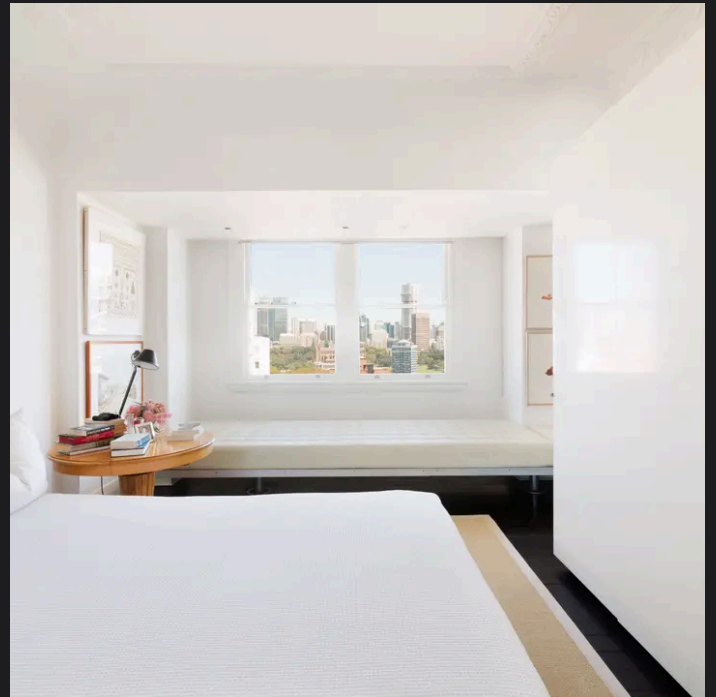
Sold

37/123-125 MACLEAY STREET
POTTS POINT



RAY WHITE TAYLORJONES

All information contained herein is gathered from sources we believe to be reliable. However, we cannot guarantee it's accuracy and interested persons should rely on their own enquiries. Dimensions are approximate.



Disclaimer: All information provided is sourced from what we believe to be reliable sources. However, we do not guarantee its accuracy, and interested parties should conduct their own enquiries. Scale in metres. Indicative only. Dimensions are approximate.