

RayWhite[®]

TOUMA TAYLOR



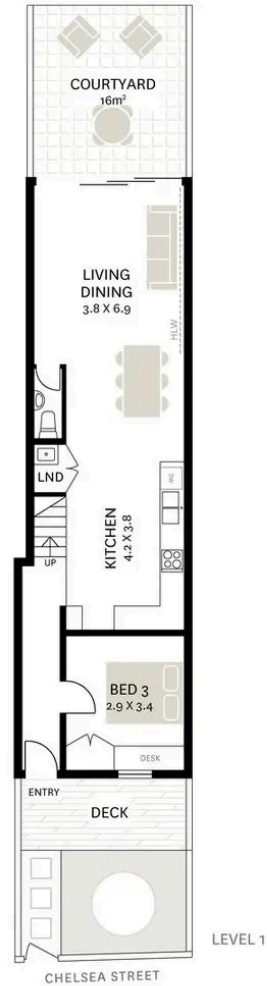
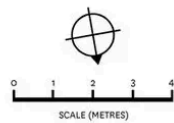
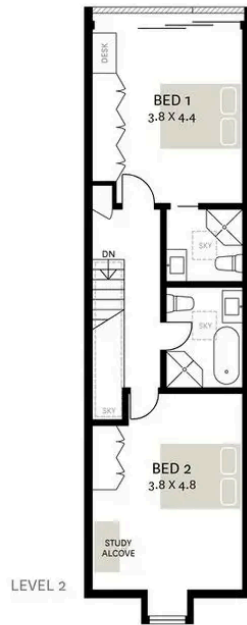
Sold Off Market by Charles Touma

37A Chelsea Street, Redfern

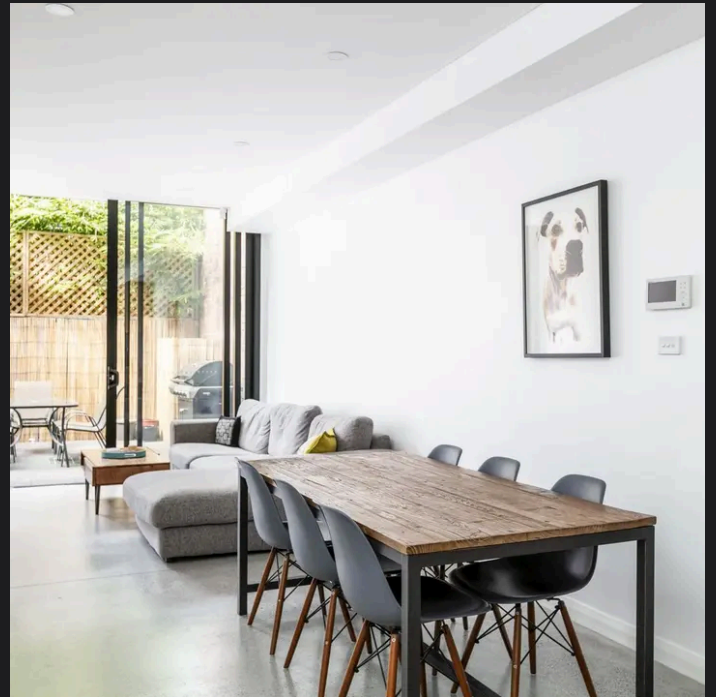
3 bed 2 bath

Sold

Approx. Total Size: 141m²



WE BELIEVE THE INFORMATION IN THIS DOCUMENT TO BE RELIABLE, HOWEVER INTERESTED PERSONS SHOULD MAKE THEIR OWN ENQUIRIES. DIMENSIONS ARE APPROXIMATE.



Charles Tuma 0425 305 455
charles.tuma@raywhite.com

Hayden Richards 0414 872 784
hayden.richards@raywhite.com

Disclaimer: All information provided is sourced from what we believe to be reliable sources. However, we do not guarantee its accuracy, and interested parties should conduct their own enquiries. Scale in metres. Indicative only. Dimensions are approximate.