

RayWhite®

TOUMA TAYLOR



**Charming Federation Home With Potential
In Prized Street**

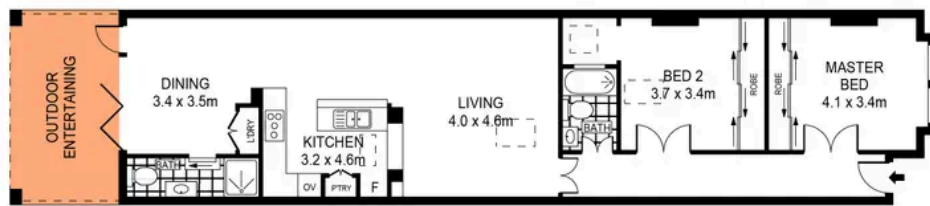
38 Portman Street, Zetland

2 bed 2 bath 2 car

Sold



SITE PLAN
(NOT TO SCALE)



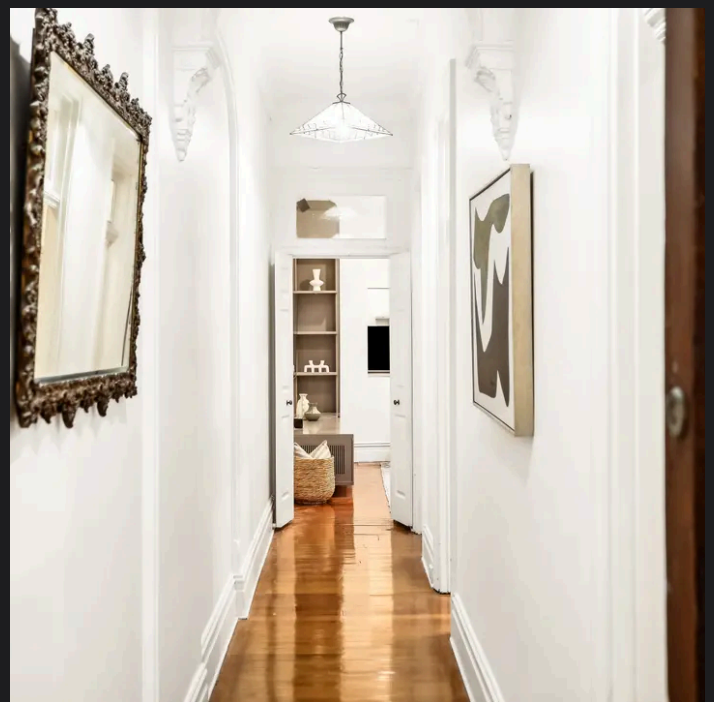
0 1 2 3 4 5
SCALE (METRES)

PLANS SHOWN ONLY INDICATIVE OF LAYOUT. DIMENSIONS ARE APPROXIMATE.
Ref. No: 109902



38 PORTMAN STREET

ZETLAND



Max Klimenko 0425 336 555
max.klimenko@raywhite.com

Disclaimer: All information provided is sourced from what we believe to be reliable sources. However, we do not guarantee its accuracy, and interested parties should conduct their own enquiries. Scale in metres. Indicative only. Dimensions are approximate.