

RayWhite®

TOUMA TAYLOR

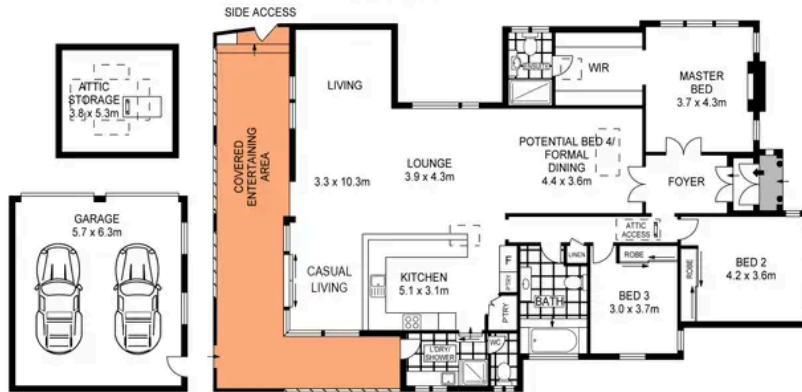
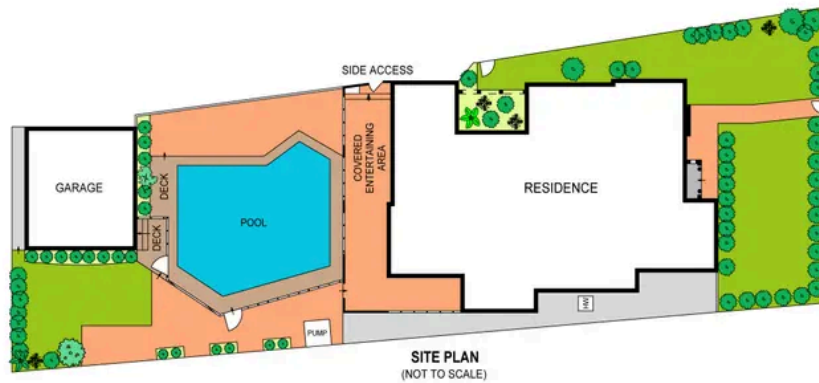


**Captivating Home in One of Rosebery's
Finest Streets**

38 Trevilyan Avenue, Rosebery

3 bed 3 bath 2 car

Sold



SCALE (METRES)

PLANS SHOWN ONLY INDICATIVE OF LAYOUT. DIMENSIONS ARE APPROXIMATE.
Ref. No: 101629



38 TREVILYAN AVENUE

ROSEBERY



Roger Wardy 0481 355 493
roger.wardy@raywhite.com

Disclaimer: All information provided is sourced from what we believe to be reliable sources. However, we do not guarantee its accuracy, and interested parties should conduct their own enquiries. Scale in metres. Indicative only. Dimensions are approximate.