

# **RayWhite®**

TOUMA TAYLOR

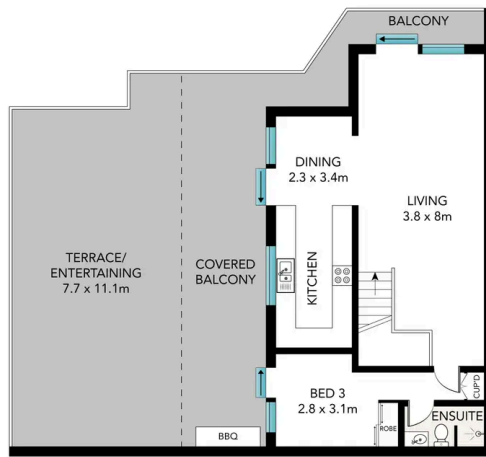


**Stylish penthouse living with expansive views**

3906/177 Mitchell Road, Erskineville

3 bed 3 bath 2 car

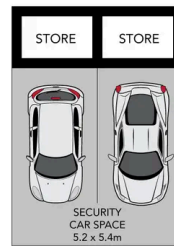
**Sold**



LEVEL TEN



LEVEL NINE



Scale in metres. Indicative only. Dimensions are approximate. All information contained herein is gathered from sources we believe to be reliable. However, we cannot guarantee its accuracy and interested persons should rely on their own enquiries.



**Ray White.**

3906/177 Mitchell Road, Erskineville



**Walter Burfitt-Williams 0402 833 566**  
[walter.bw@raywhite.com](mailto:walter.bw@raywhite.com)

**Disclaimer:** All information provided is sourced from what we believe to be reliable sources. However, we do not guarantee its accuracy, and interested parties should conduct their own enquiries. Scale in metres. Indicative only. Dimensions are approximate.