

RayWhite[®]

TOUMA TAYLOR

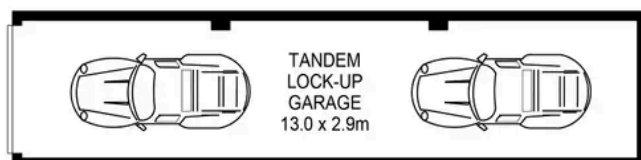


**Beautifully Renovated Apartment In Prized
'Kimberley Estate'**

402/83-93 Dalmeny Avenue, Rosebery

2 bed 2 bath 2 car

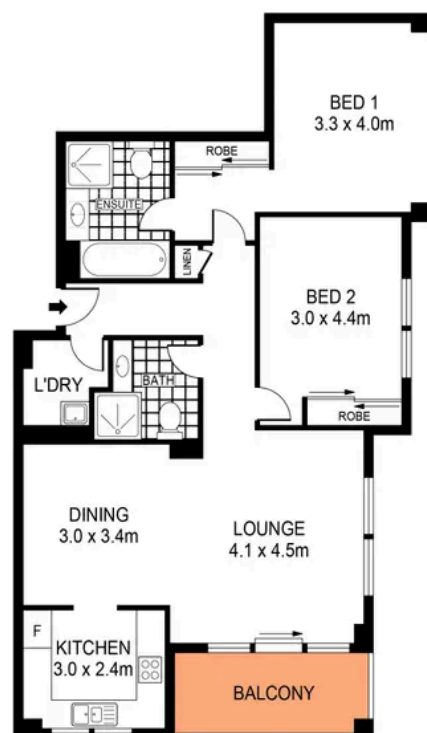
Sold



LEVEL THREE

0 1 2 3 4 5
SCALE (METRES)

PLANS SHOWN ONLY INDICATIVE OF LAYOUT. DIMENSIONS ARE APPROXIMATE.
Ref. No: 83207

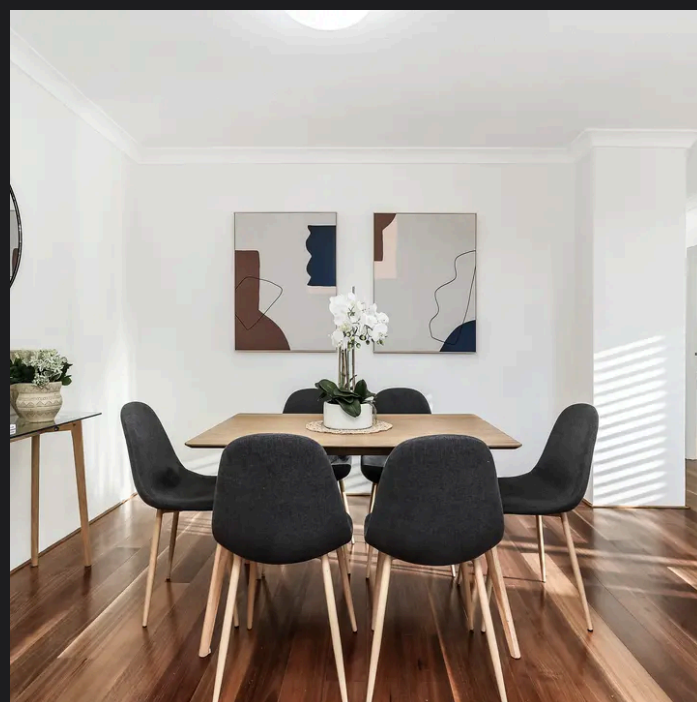
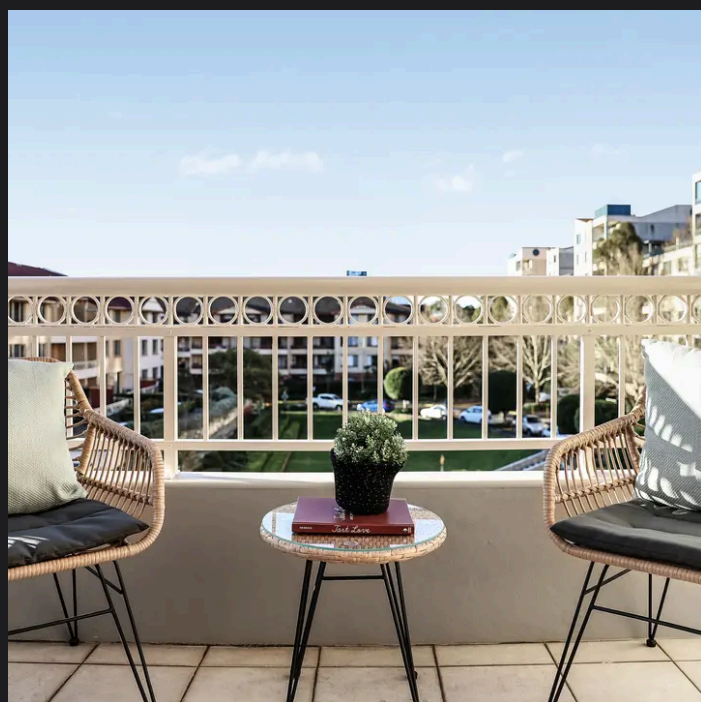


LEVEL THREE



402/83-93 DALMENY AVENUE

ROSEBERY



Max Klimenko 0425 336 555
max.klimenko@raywhite.com

Disclaimer: All information provided is sourced from what we believe to be reliable sources. However, we do not guarantee its accuracy, and interested parties should conduct their own enquiries. Scale in metres. Indicative only. Dimensions are approximate.