

# **RayWhite®**

TOUMA TAYLOR



**Contemporary Style With Balcony &  
Harbour Bridge View**

406/18 Bayswater Road, Potts Point

1 bed 1 bath

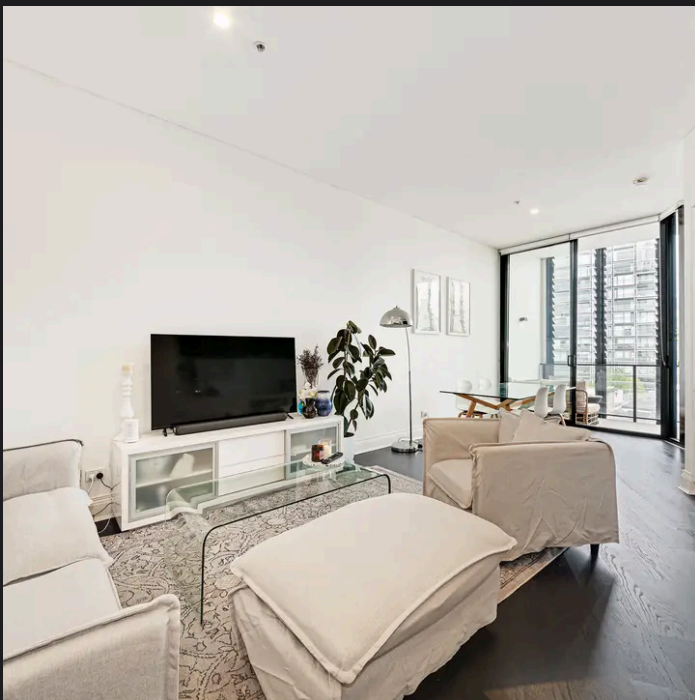
**Sold**

RayWhite.



406/18 Bayswater Road, Potts Point

While RayWhite takes every care in the preparation of this plan, it is shown for general guidance only. All areas, measurements and dimensions are approximate and subject to change. RayWhite and our vendor will accept no responsibility for its accuracy. Interested parties are advised to make their own enquiries.



**Renee Cross 0413 764 566**  
renee.cross@raywhite.com

**Nickolas Voloshanskyi**  
nickolas.voloshanskyi@raywhite.com

**Disclaimer:** All information provided is sourced from what we believe to be reliable sources. However, we do not guarantee its accuracy, and interested parties should conduct their own enquiries. Scale in metres. Indicative only. Dimensions are approximate.