

RayWhite[®]

TOUMA TAYLOR

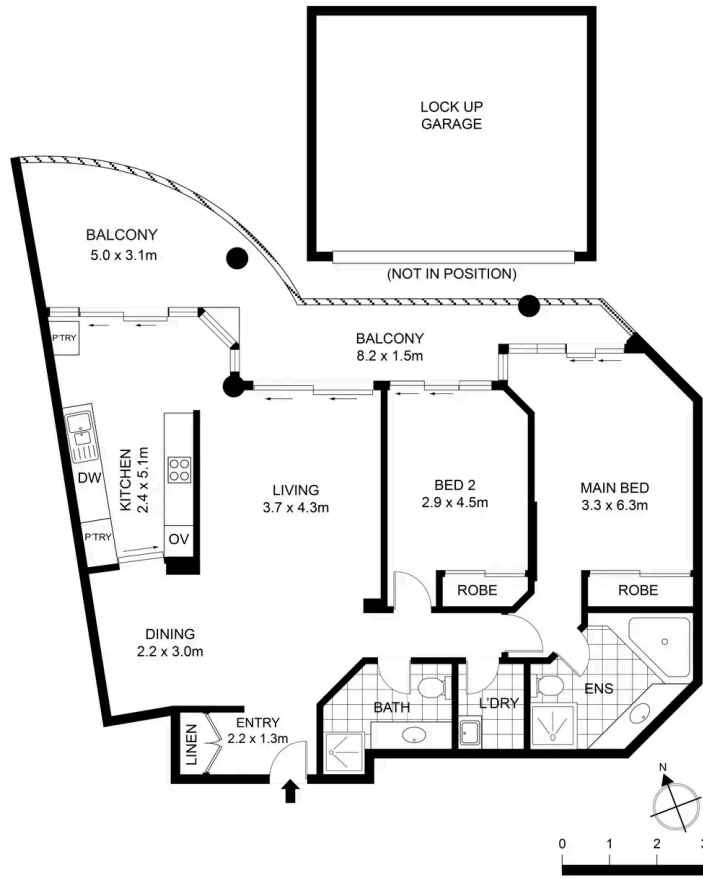


**Elegant North-East Facing Residence in
Prestigious 'Glen Eagles'**

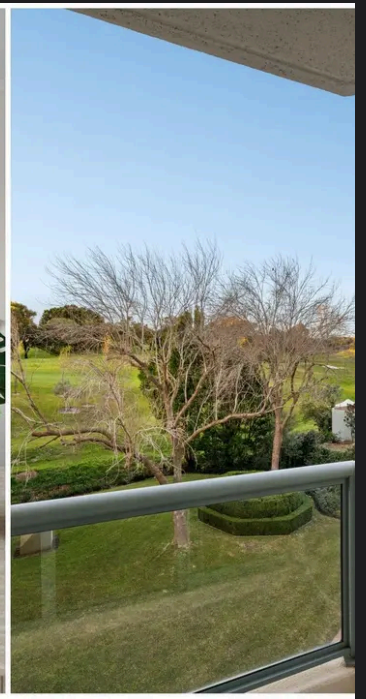
407/93 Brompton Road, Kensington

2 bed 2 bath 2 car

Sold



Disclaimer: All information provided is sourced from what we believe to be reliable sources. However, we do not guarantee its accuracy, and interested parties should conduct their own enquiries. Scale in metres. Indicative only. Dimensions are approximate.



Roger Wardy 0481 355 493
roger.wardy@raywhite.com

Ferhat Akin 0410 232 871
ferhat.akin@raywhite.com