

# RayWhite®

TOUMA TAYLOR

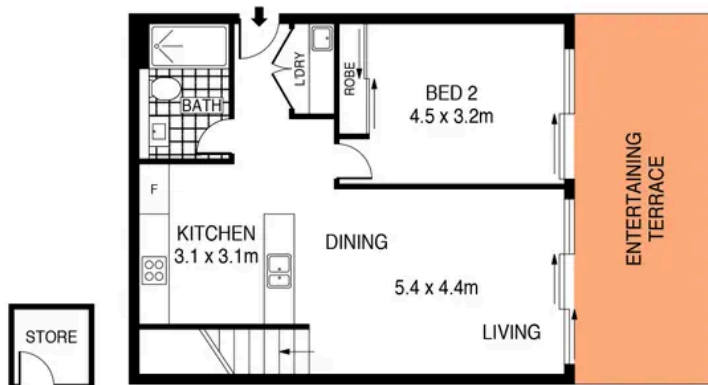


**Sleek Warehouse Conversion in Former  
'Swarovski' Headquarters**

408/12 Primrose Avenue, Rosebery

2 bed 2 bath

**Sold**

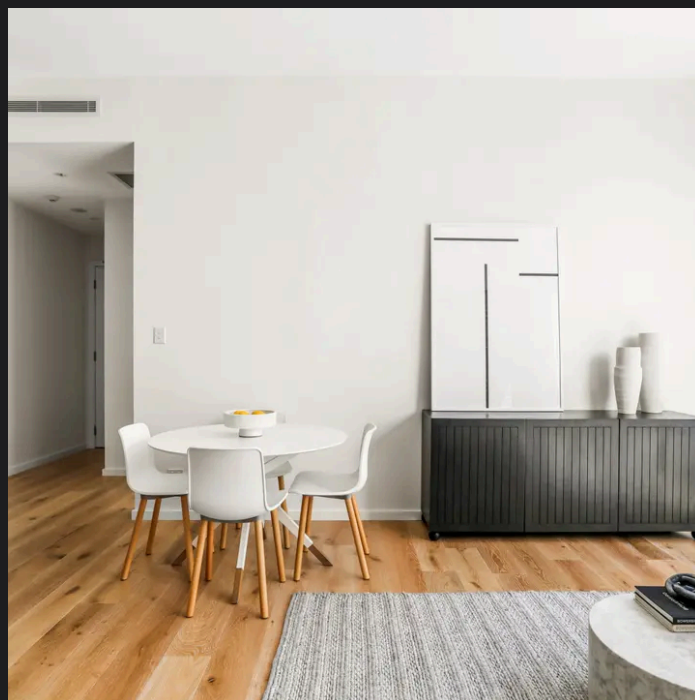
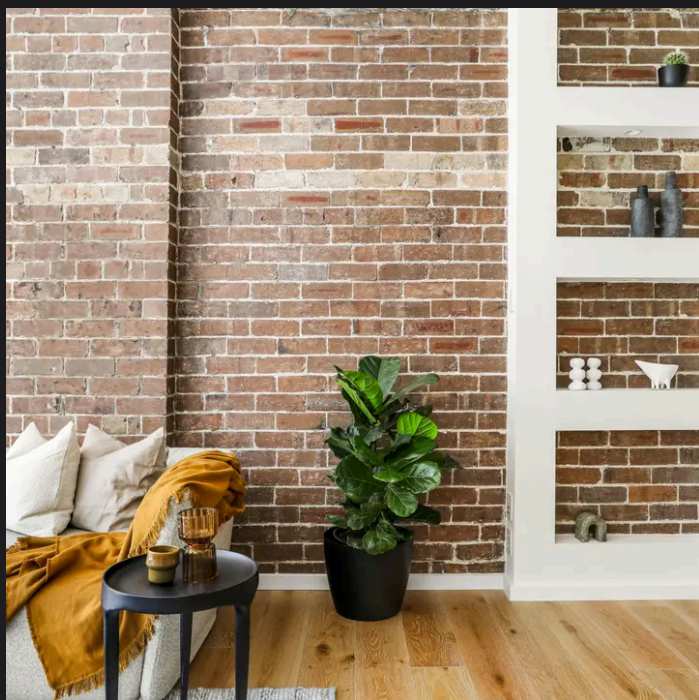


PLANS SHOWN ONLY INDICATIVE OF LAYOUT. DIMENSIONS ARE APPROXIMATE.  
Ref. No: 106049



408/12 PRIMROSE AVENUE

ROSEBERY



**Max Klimenko 0425 336 555**  
max.klimenko@raywhite.com

**Disclaimer:** All information provided is sourced from what we believe to be reliable sources. However, we do not guarantee its accuracy, and interested parties should conduct their own enquiries. Scale in metres. Indicative only. Dimensions are approximate.