

# **RayWhite®**

TOUMA TAYLOR

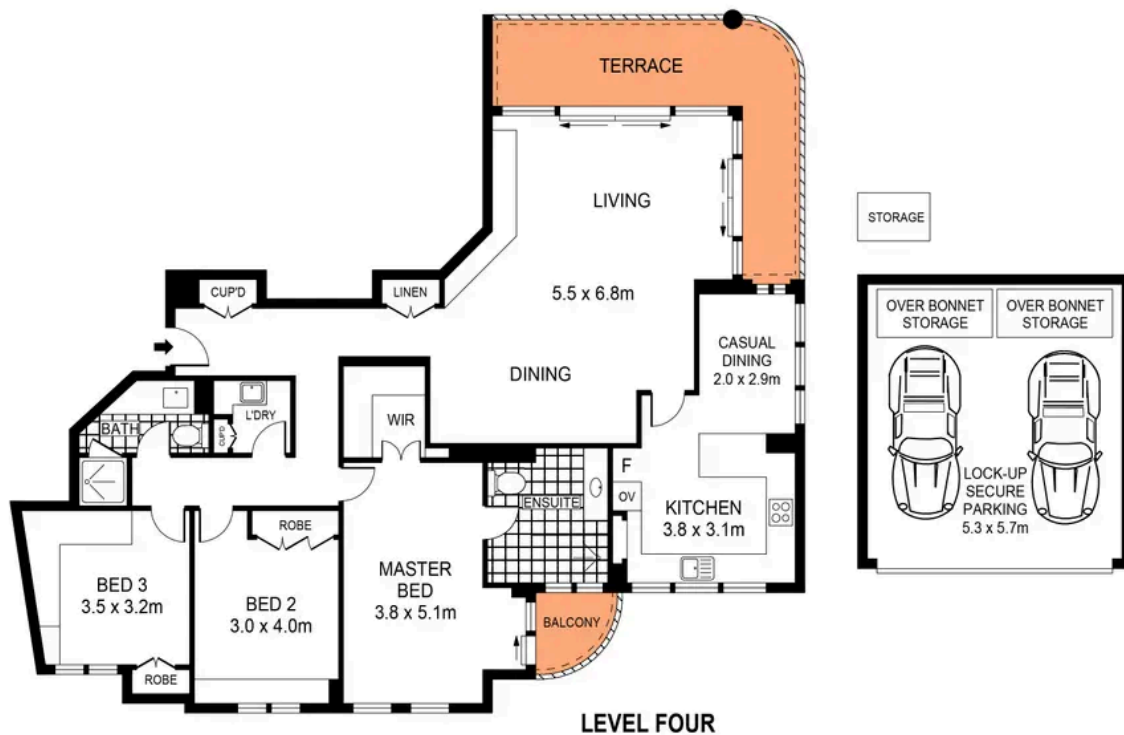


**Space, Comfort and Lifestyle with Superb  
Golf Course Views**

408/93 Brompton Road, Kensington

3 bed 2 bath 2 car

**Sold**



0 1 2 3 4 5  
SCALE (METRES)

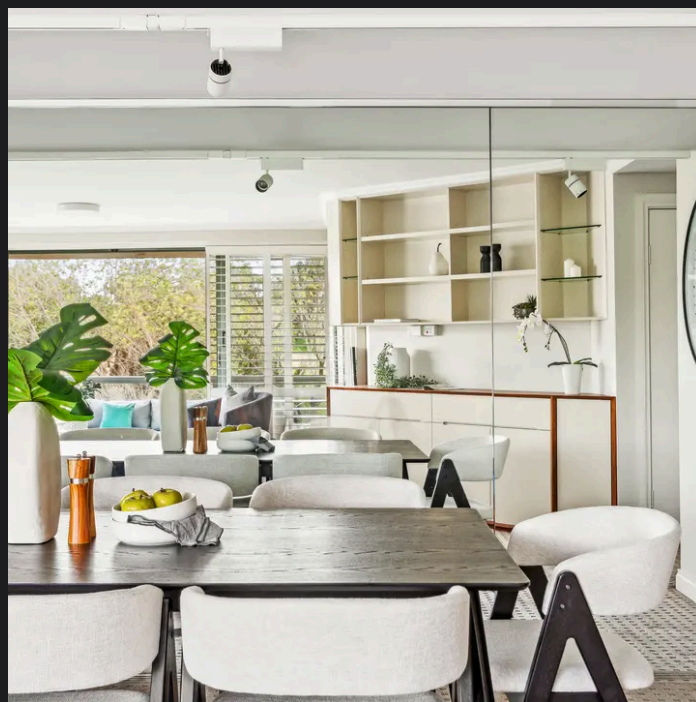
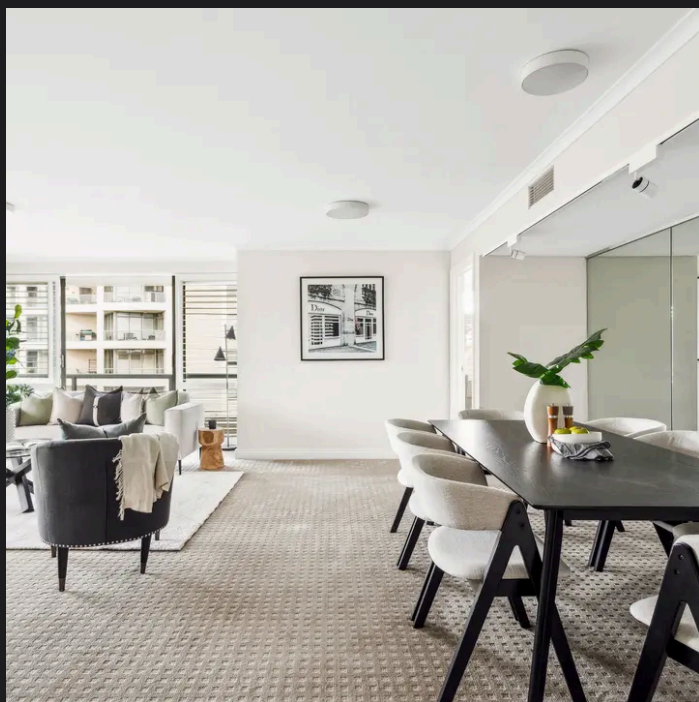
PLANS SHOWN ONLY INDICATIVE OF LAYOUT. DIMENSIONS ARE APPROXIMATE.  
Ref. No: 01534

APPROX. INTERNAL AREA: 162m<sup>2</sup>  
APPROX. TOTAL AREA: 194m<sup>2</sup>



408/93 BROMPTON ROAD

KENSINGTON



**Roger Wardy 0481 355 493**  
roger.wardy@raywhite.com

**Ferhat Akin 0410 232 871**  
ferhat.akin@raywhite.com

**Disclaimer:** All information provided is sourced from what we believe to be reliable sources. However, we do not guarantee its accuracy, and interested parties should conduct their own enquiries. Scale in metres. Indicative only. Dimensions are approximate.