

RayWhite®

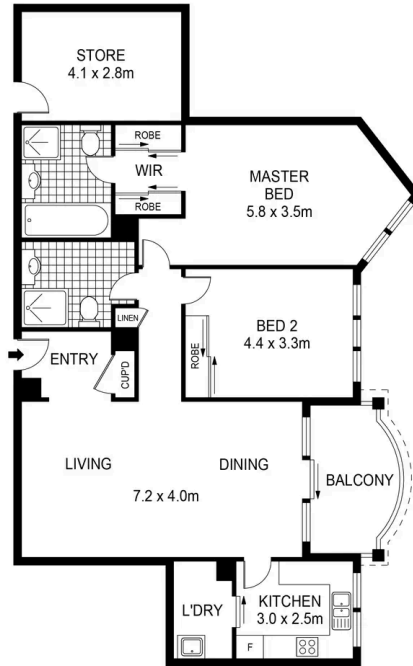
TOUMA TAYLOR



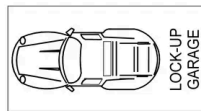
Peaceful Retreat with City Fringe Perks

417/83-93 Dalmeny Avenue, Rosebery

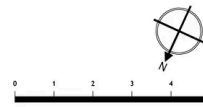
2 bed 2 bath 1 car



SECOND LEVEL



THIRD LEVEL



Disclaimer: All information provided is sourced from what we believe to be reliable sources. However, we do not guarantee its accuracy, and interested parties should conduct their own enquiries. Scale in metres. Indicative only. Dimensions are approximate.



Max Klimenko 0425 336 555
max.klimenko@raywhite.com

Dylan Corelli 0458 711 577
dylan.corelli@raywhite.com