

# **RayWhite®**

TOUMA TAYLOR

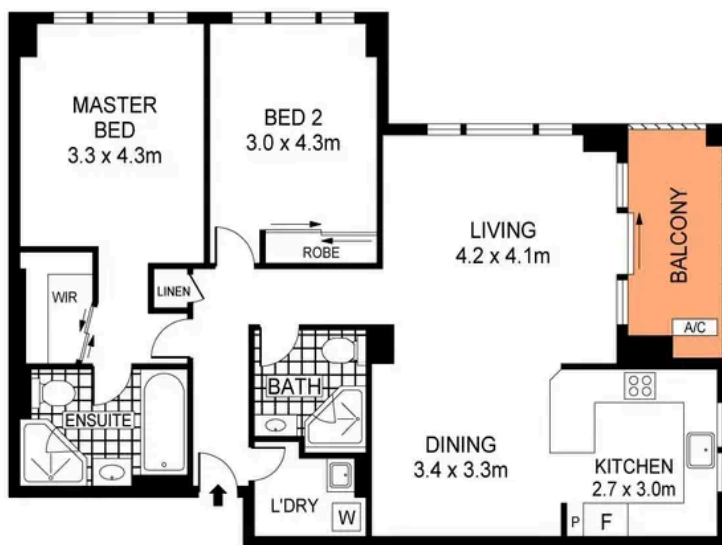


**Stylishly Renovated Lifestyle Sanctuary In  
Kimberley Estate**

422/83-93 Dalmeny Avenue, Rosebery

2 bed 2 bath 2 car

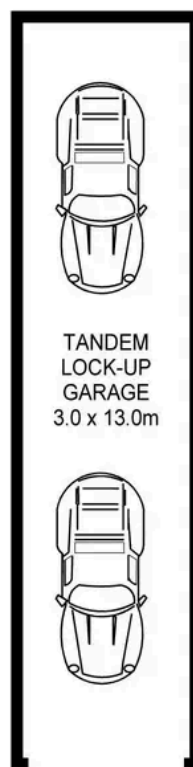
**Sold**



THIRD FLOOR

0 1 2 3 4 5  
SCALE (METRES)

PLANS SHOWN ONLY INDICATIVE OF LAYOUT. DIMENSIONS ARE APPROXIMATE.  
Ref. No: 109586



TANDEM  
LOCK-UP  
GARAGE  
3.0 x 13.0m



422/83-93 DALMENY AVENUE

ROSEBERY



**Max Klimenko 0425 336 555**  
max.klimenko@raywhite.com

**Disclaimer:** All information provided is sourced from what we believe to be reliable sources. However, we do not guarantee its accuracy, and interested parties should conduct their own enquiries. Scale in metres. Indicative only. Dimensions are approximate.