

RayWhite®

TOUMA TAYLOR

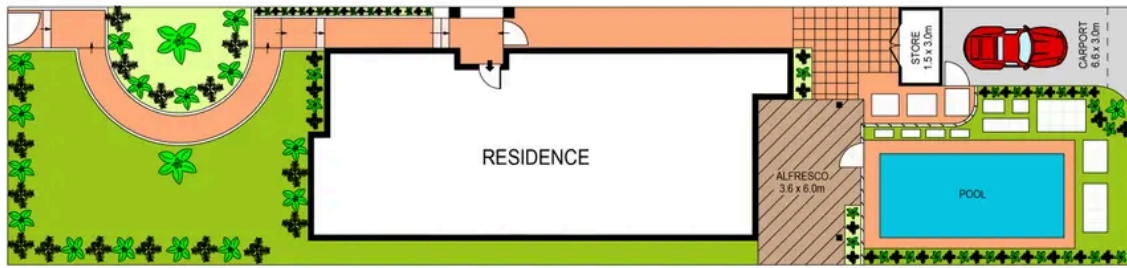


**Stylish Renovated c1920s Beauty in
Kingsford's Finest Avenue**

45 Shaw Avenue, Kingsford

5 bed 3 bath 1 car

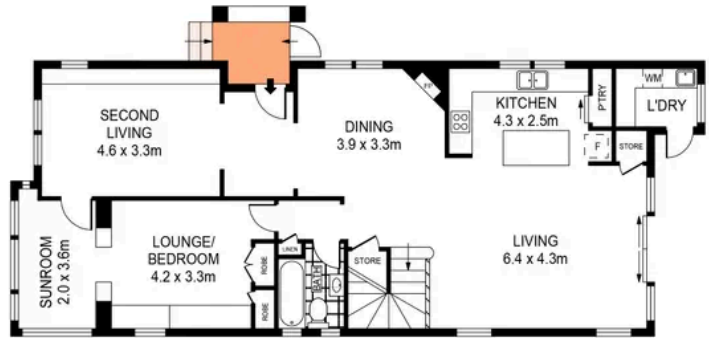
Sold



SITE PLAN
(NOT TO SCALE)



FIRST FLOOR



GROUND FLOOR

0 1 2 3 4 5 **SCALE (METRES)**

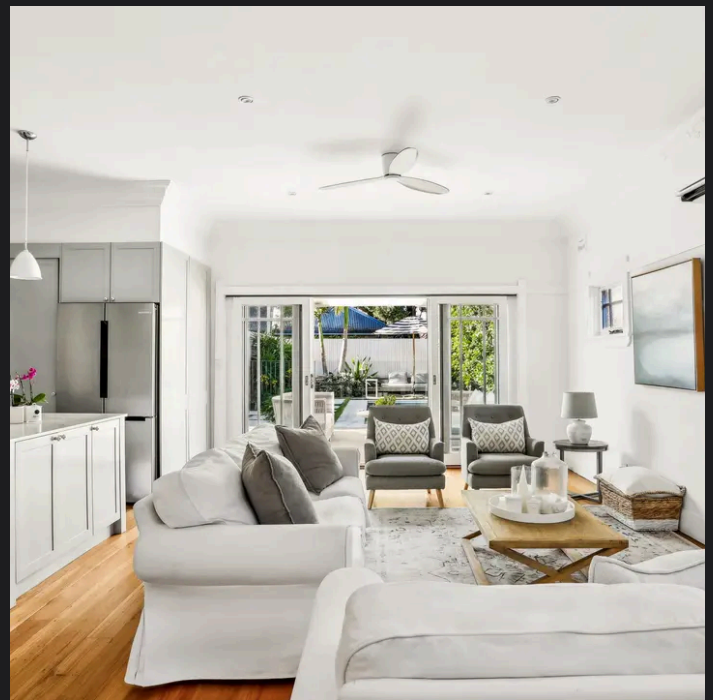
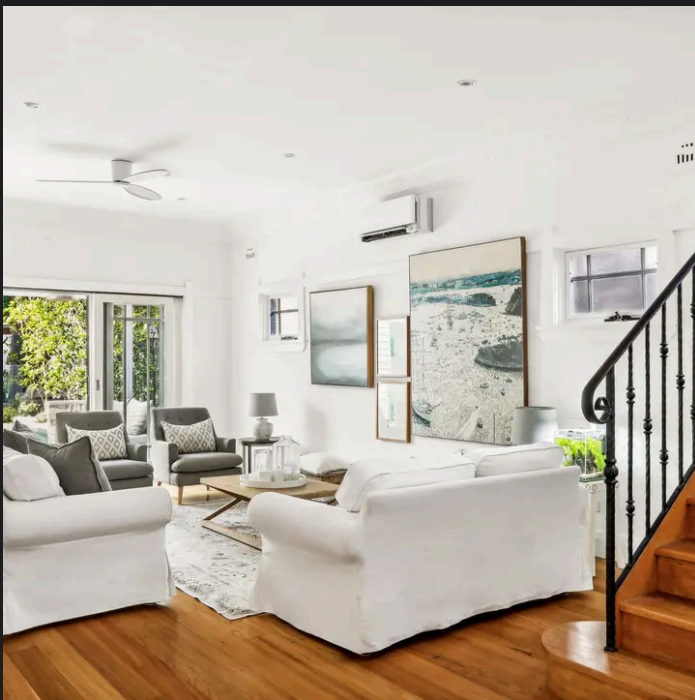
PLANS SHOWN ONLY INDICATIVE OF LAYOUT. DIMENSIONS ARE APPROXIMATE.
Ref. No: 109892

APPROX. INTERNAL AREA : 197m²
LAND SIZE : 455m²



45 SHAW AVENUE

KINGSFORD



Roger Wardy 0481 355 493
roger.wardy@raywhite.com

Disclaimer: All information provided is sourced from what we believe to be reliable sources. However, we do not guarantee its accuracy, and interested parties should conduct their own enquiries. Scale in metres. Indicative only. Dimensions are approximate.