

# RayWhite®

TOUMA TAYLOR

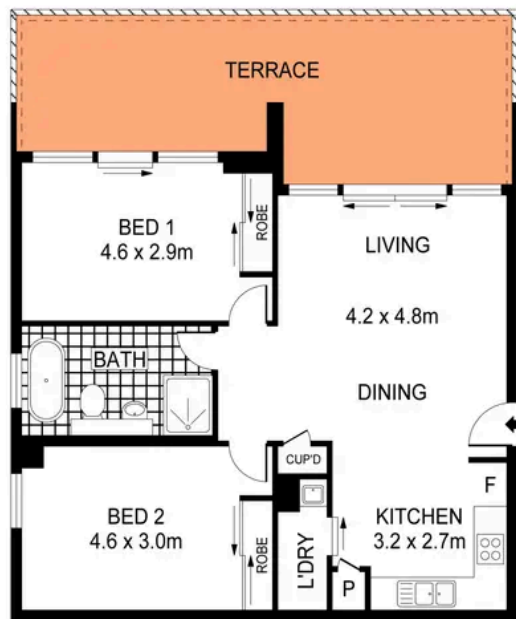


**North-Facing Retreat with Superb  
Entertaining Credentials**

451/102 Dalmeny Avenue, Rosebery

2 bed 1 bath 1 car

**Sold**



STORAGE  
CAGE  
2m<sup>2</sup>



SECURE  
CARSPACE  
16m<sup>2</sup>

#### LEVEL FOUR

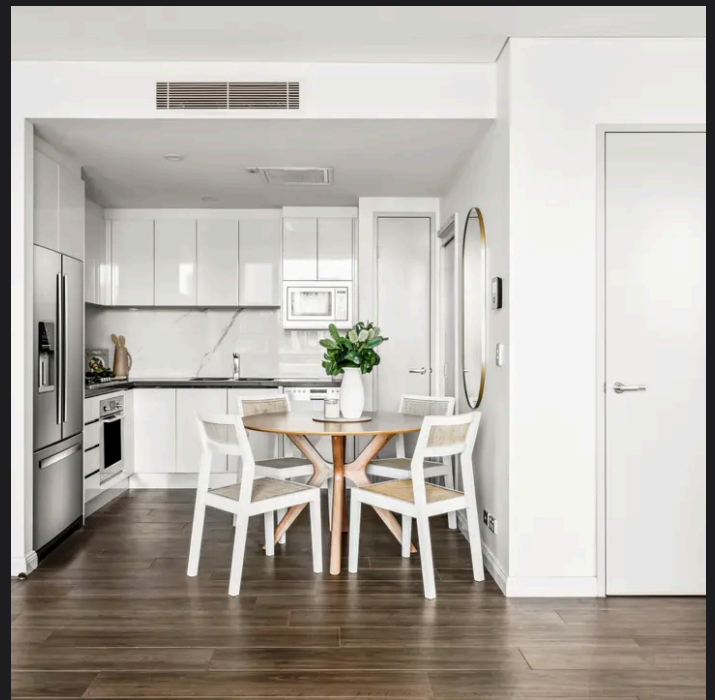
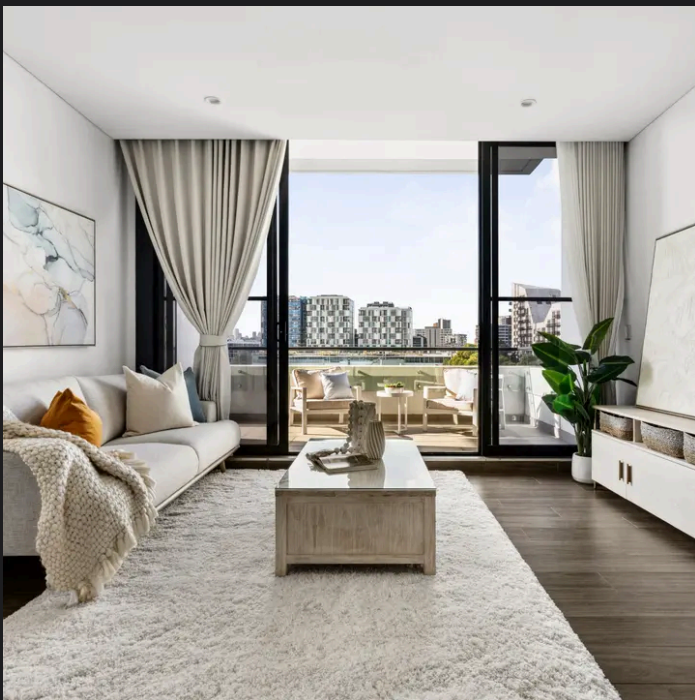
0 1 2 3 4 5  
SCALE (METRES)

PLANS SHOWN ONLY INDICATIVE OF LAYOUT. DIMENSIONS ARE APPROXIMATE.  
Ref. No: 01338



451/102 DALMENY AVENUE

ROSEBERY



**Max Klimenko 0425 336 555**  
max.klimenko@raywhite.com

**Disclaimer:** All information provided is sourced from what we believe to be reliable sources. However, we do not guarantee its accuracy, and interested parties should conduct their own enquiries. Scale in metres. Indicative only. Dimensions are approximate.