

# **RayWhite®**

TOUMA TAYLOR



**Oversized Courtyard Apartment with  
Private Entry**

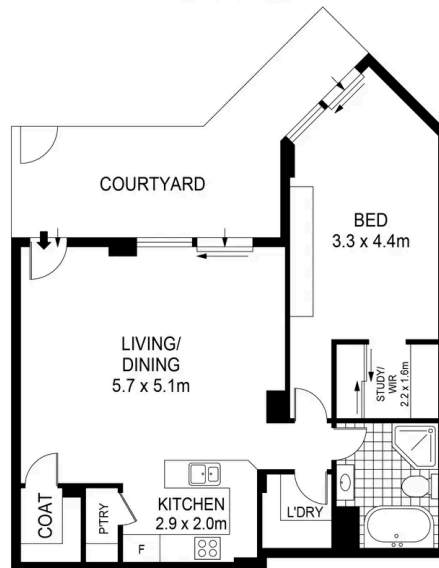
454/83-93 Dalmeny Avenue, Rosebery

1 bed 1 bath 1 car

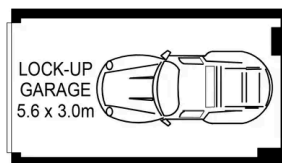
**Sold**

**RayWhite.**

TOUMA TAYLOR



GROUND LEVEL



LEVEL ONE



Disclaimer: All information provided is sourced from what we believe to be reliable sources. However, we do not guarantee its accuracy, and interested parties should conduct their own enquiries. Scale in metres. Indicative only. Dimensions are approximate.



**Max Klimenko 0425 336 555**  
max.klimenko@raywhite.com

**Dylan Corelli 0458 711 577**  
dylan.corelli@raywhite.com

**Disclaimer:** All information provided is sourced from what we believe to be reliable sources. However, we do not guarantee its accuracy, and interested parties should conduct their own enquiries. Scale in metres. Indicative only. Dimensions are approximate.