

RayWhite[®]

TOUMA TAYLOR

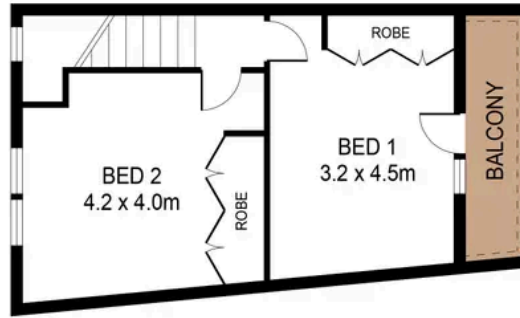


**Spacious Urban Sanctuary in a Quiet Leafy
Surry Hills Pocket**

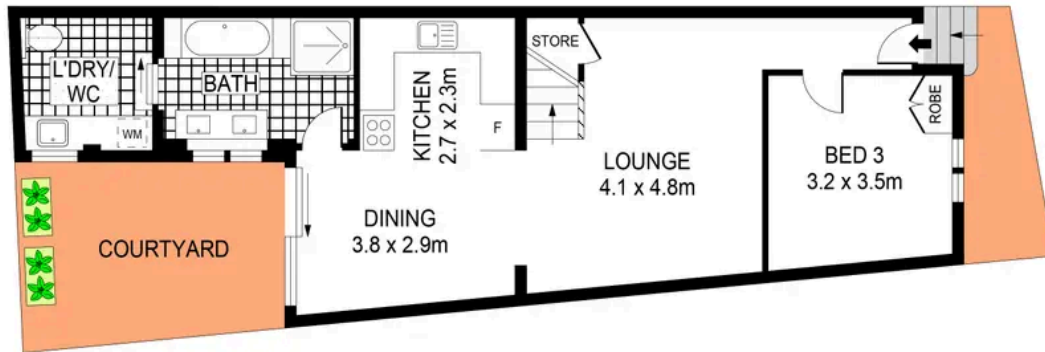
47 High Holborn Street, Surry Hills

3 bed 1 bath

Sold



LEVEL ONE



ENTRY LEVEL

0 1 2 3 4 5 SCALE (METRES)

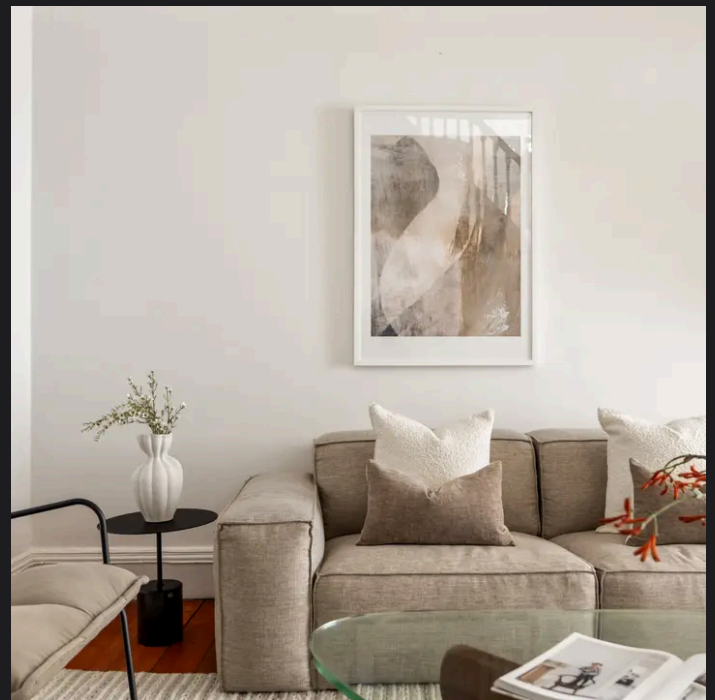
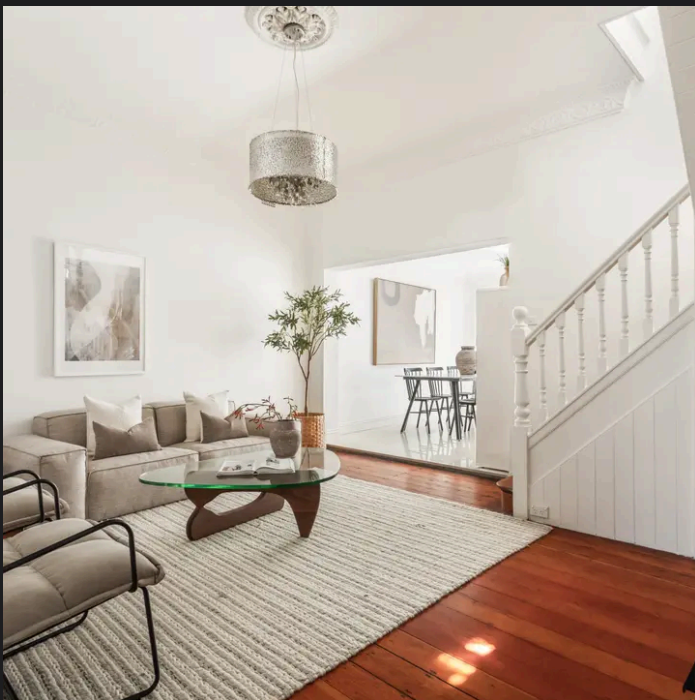
PLANS SHOWN ONLY INDICATIVE OF LAYOUT. DIMENSIONS ARE APPROXIMATE.
Ref. No. 02722

APPROX. TOTAL AREA : 123m²



47 HIGH HOLBORN STREET

SURRY HILLS



Amber Riethmuller 0411 437 673
amber.riethmuller@raywhite.com

Charles Tuma 0425 305 455
charles.tuma@raywhite.com

Disclaimer: All information provided is sourced from what we believe to be reliable sources. However, we do not guarantee its accuracy, and interested parties should conduct their own enquiries. Scale in metres. Indicative only. Dimensions are approximate.