

RayWhite®

TOUMA TAYLOR

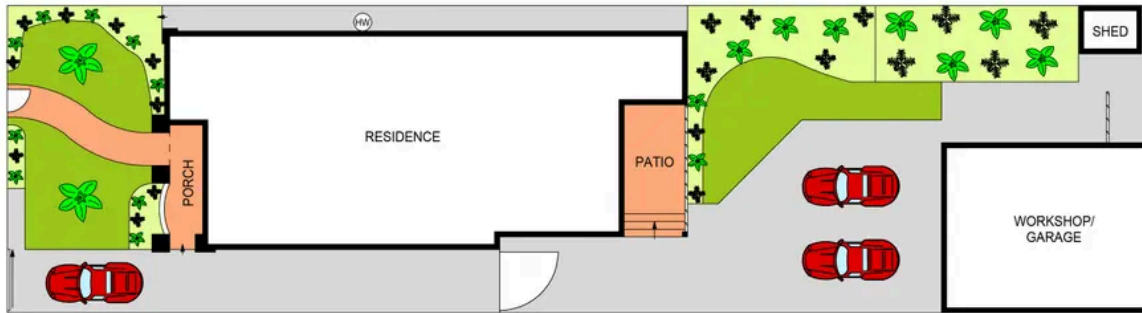


**Solid Full-Brick Family Home in Highly
Sought-After Pocket**

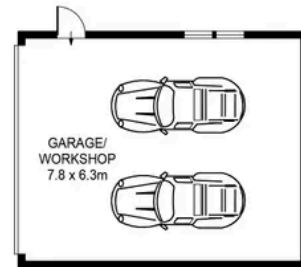
48 Dalmeny Avenue, Rosebery

3 bed 2 bath 4 car

Sold



SITE PLAN
(NOT TO SCALE)



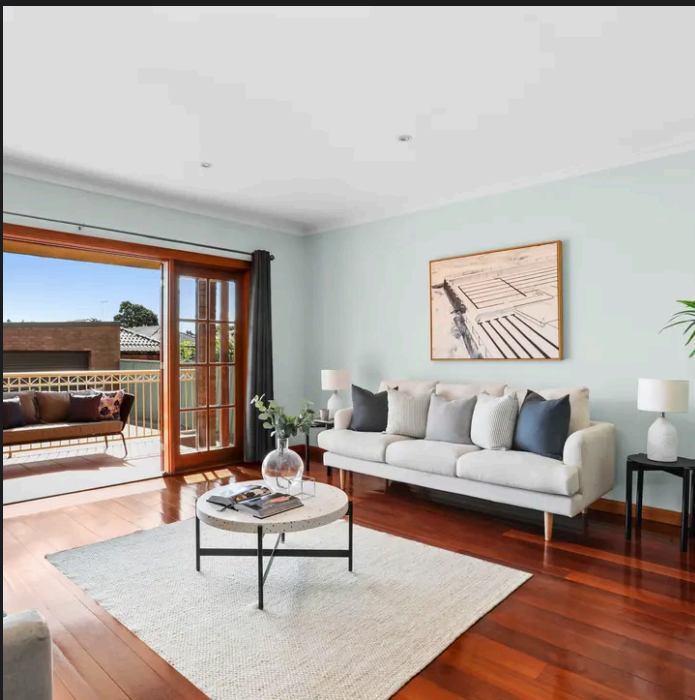
SCALE (METRES)

PLANS SHOWN ONLY INDICATIVE OF LAYOUT. DIMENSIONS ARE APPROXIMATE.
Ref. No: 102783



48 DALMENY AVENUE

ROSEBERY



Roger Wardy 0481 355 493
roger.wardy@raywhite.com

Disclaimer: All information provided is sourced from what we believe to be reliable sources. However, we do not guarantee its accuracy, and interested parties should conduct their own enquiries. Scale in metres. Indicative only. Dimensions are approximate.