

RayWhite®

TOUMA TAYLOR

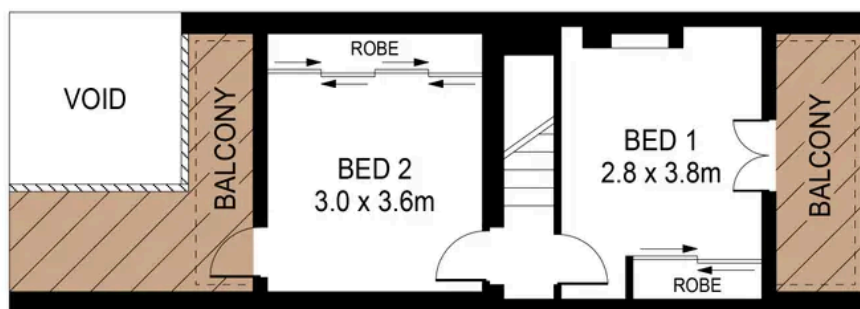


**Immaculate Terrace Home with Multiple
Outdoor Settings**

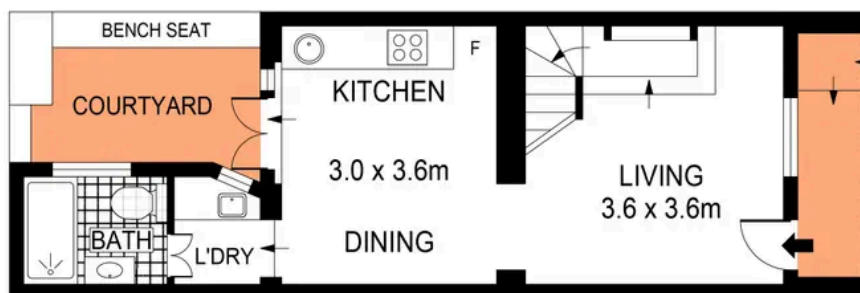
48 Little Riley Street, Surry Hills

2 bed 1 bath

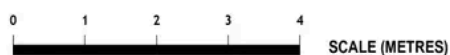
Sold



LEVEL ONE



ENTRY LEVEL

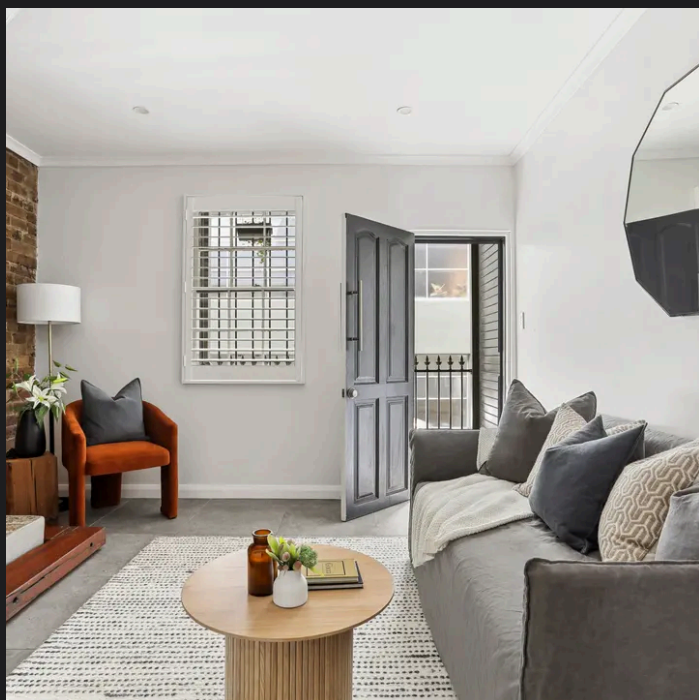


PLANS SHOWN ONLY INDICATIVE OF LAYOUT. DIMENSIONS ARE APPROXIMATE.
Ref. No: 109307



48 LITTLE RILEY STREET

SURRY HILLS



Charles Touma 0425 305 455
charles.touma@raywhite.com

Disclaimer: All information provided is sourced from what we believe to be reliable sources. However, we do not guarantee its accuracy, and interested parties should conduct their own enquiries. Scale in metres. Indicative only. Dimensions are approximate.