

RayWhite®

TOUMA TAYLOR

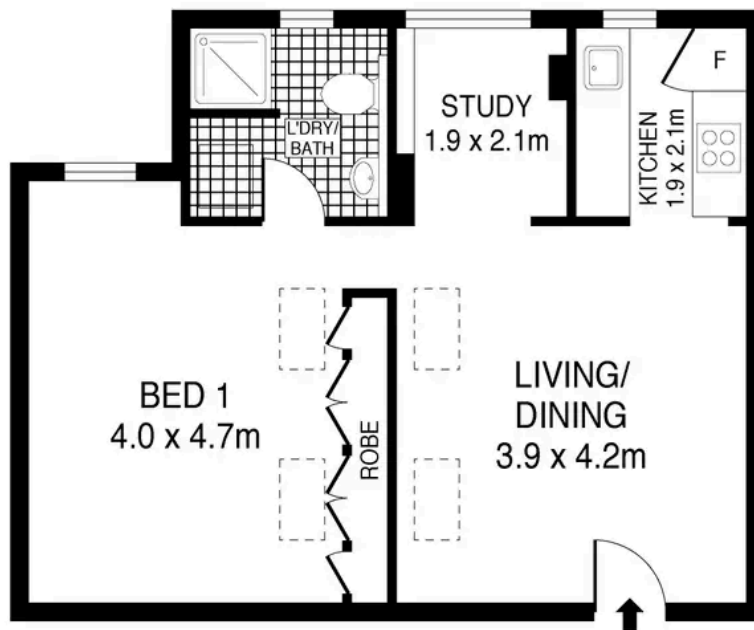


**Sleek Urban Retreat in a Historic Georgian
Revival Building**

48/360-364 Bourke Street, Surry Hills

1 bed 1 bath

Sold



0 1 2 3
SCALE (METRES)

PLANS SHOWN ONLY INDICATIVE OF LAYOUT. DIMENSIONS ARE APPROXIMATE.
Ref. No: 93713



RayWhite

48/360 BOURKE STREET

SURRY HILLS



Con Fotaras 0411 648 458
con.fotaras@raywhite.com

Disclaimer: All information provided is sourced from what we believe to be reliable sources. However, we do not guarantee its accuracy, and interested parties should conduct their own enquiries. Scale in metres. Indicative only. Dimensions are approximate.