

RayWhite®

TOUMA TAYLOR

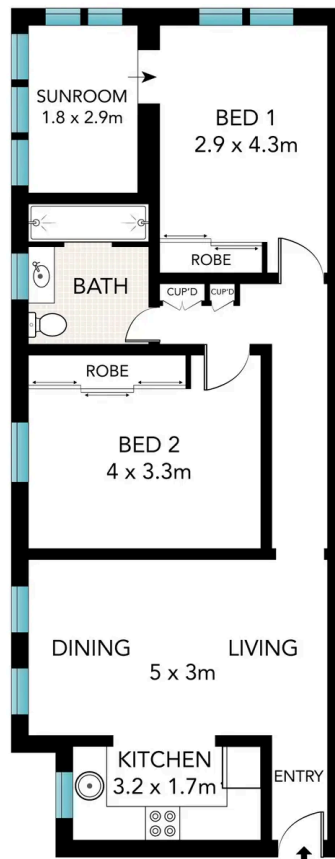


Cosy character in a dynamic address

4/88 Coogee Bay Road, Coogee

2 bed 1 bath

Sold



ELEVATED GROUND FLOOR

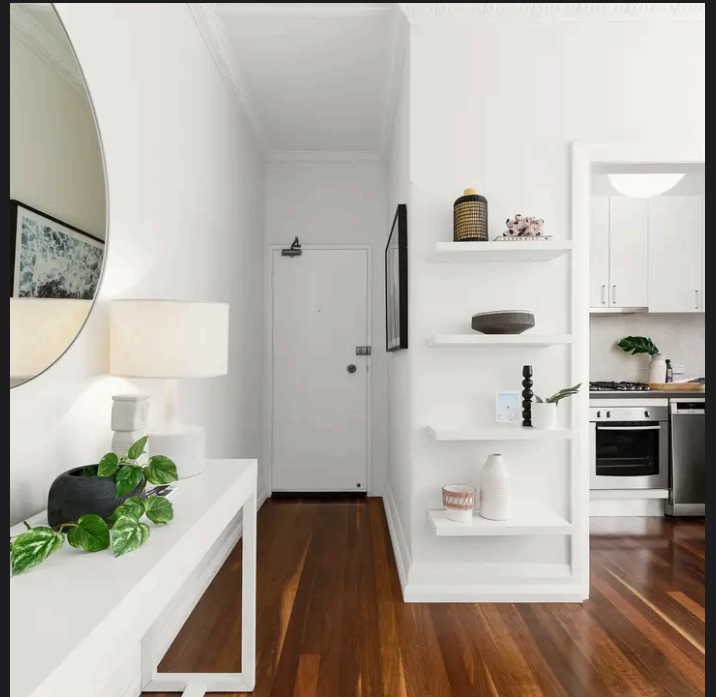


Scale in metres. Indicative only. Dimensions are approximate. All information contained herein is gathered from sources we believe to be reliable. However, we cannot guarantee its accuracy and interested persons should rely on their own enquiries.



Ray White.

4/88 Coogee Bay Road, Coogee



Disclaimer: All information provided is sourced from what we believe to be reliable sources. However, we do not guarantee its accuracy, and interested parties should conduct their own enquiries. Scale in metres. Indicative only. Dimensions are approximate.