

RayWhite®

TOUMA TAYLOR

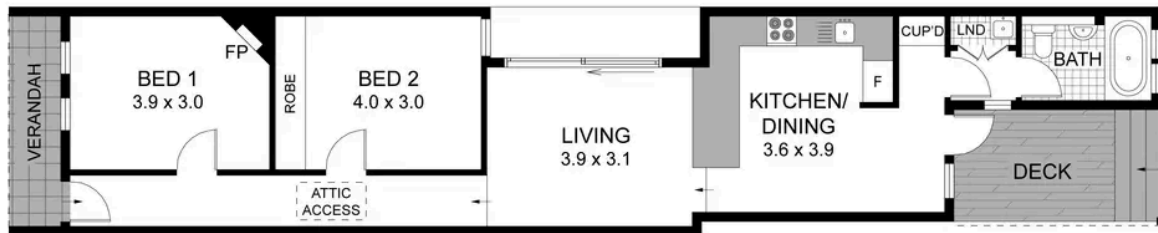


Prized lifestyle and location

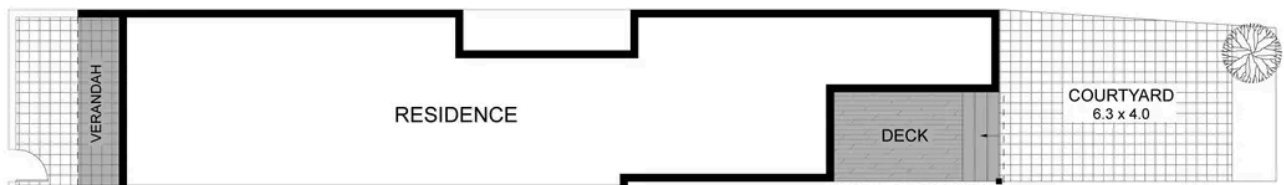
5 Ashmore Street, Erskineville

2 bed 1 bath

Sold



**GROUND
FLOOR**



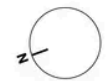
**SITE
PLAN**

0 1 2 3 4

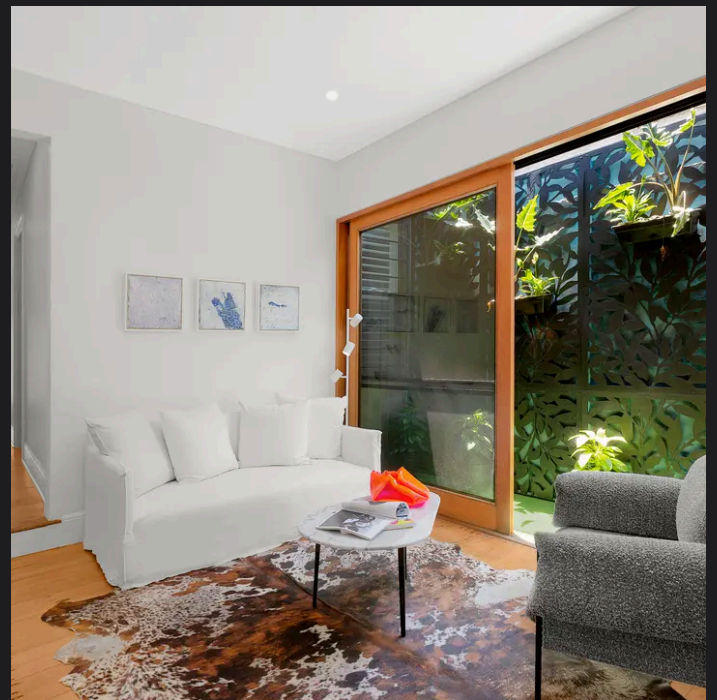
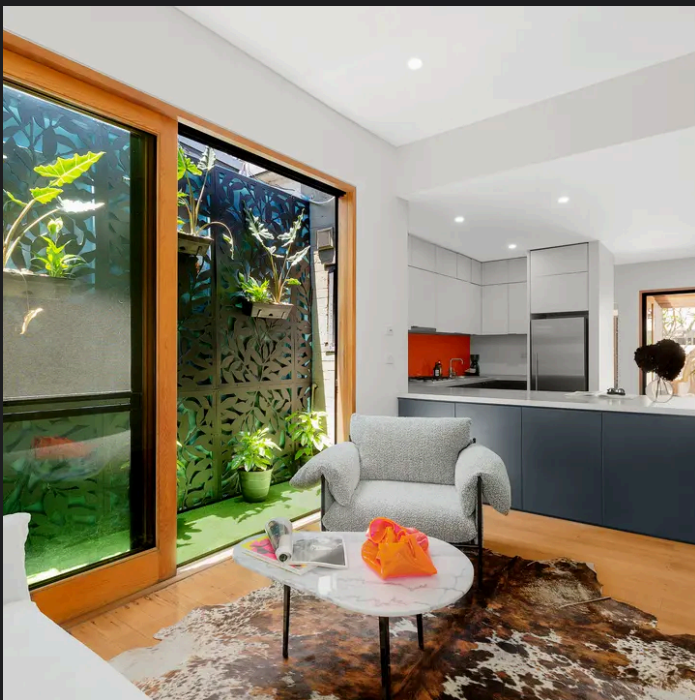
**5 ASHMORE STREET
ERSKINEVILLE
RAY WHITE TAYLOR & PARTNERS**

2 Bedrooms, 1 Bathroom

Land size (approx.) 120sqm



PLEASE NOTE: WHILST RAY WHITE TAKES EVERY CARE IN THE PURSUIT OF ACCURACY, THE PLAN IS SHOWN FOR GENERAL GUIDANCE ONLY. ALL AREAS, MEASUREMENTS AND DISTANCES ARE APPROXIMATE AND NOT TO SCALE. RAY WHITE AND OUR VENDOR WILL ACCEPT NO RESPONSIBILITY FOR ITS ACCURACY. INTERESTED PARTIES ARE ADVISED TO MAKE THEIR OWN INDEPENDENT ENQUIRIES.



Walter Burfitt-Williams 0402 833 566
walter.bw@raywhite.com

Disclaimer: All information provided is sourced from what we believe to be reliable sources. However, we do not guarantee its accuracy, and interested parties should conduct their own enquiries. Scale in metres. Indicative only. Dimensions are approximate.