

RayWhite[®]

TOUMA TAYLOR

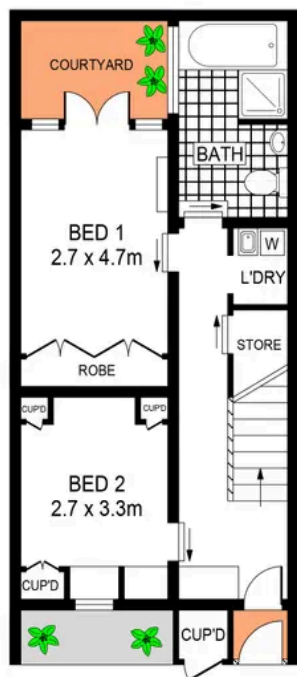


**Striking contemporary terrace in the heart
of Surry Hills**

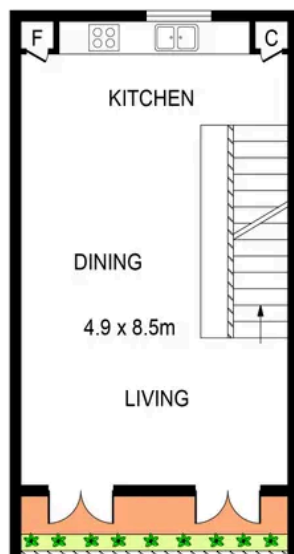
5 Jesmond Street, Surry Hills

2 bed 1 bath

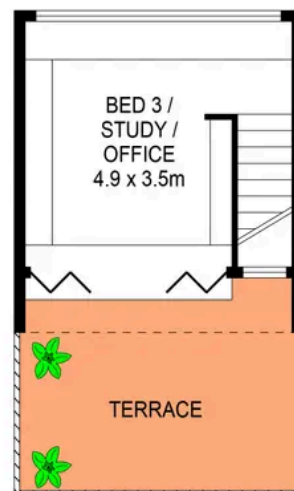
Sold



GROUND FLOOR



FIRST FLOOR



SECOND FLOOR

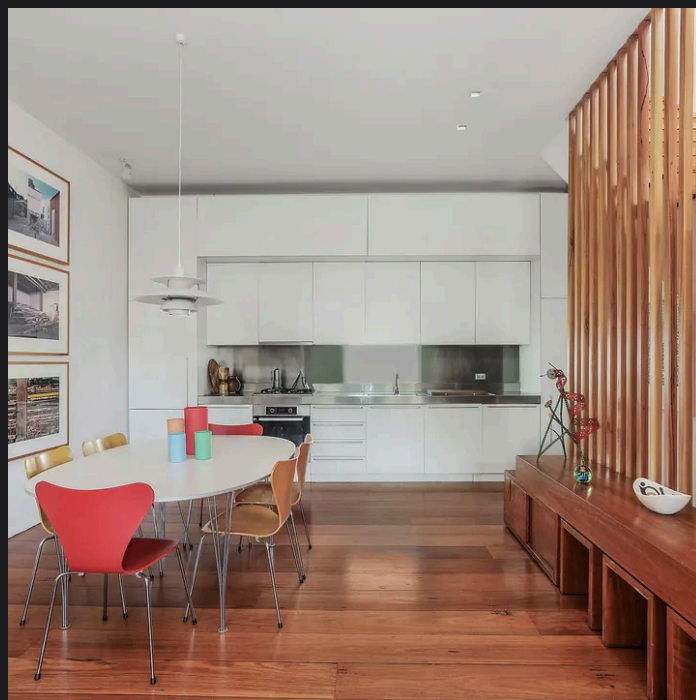
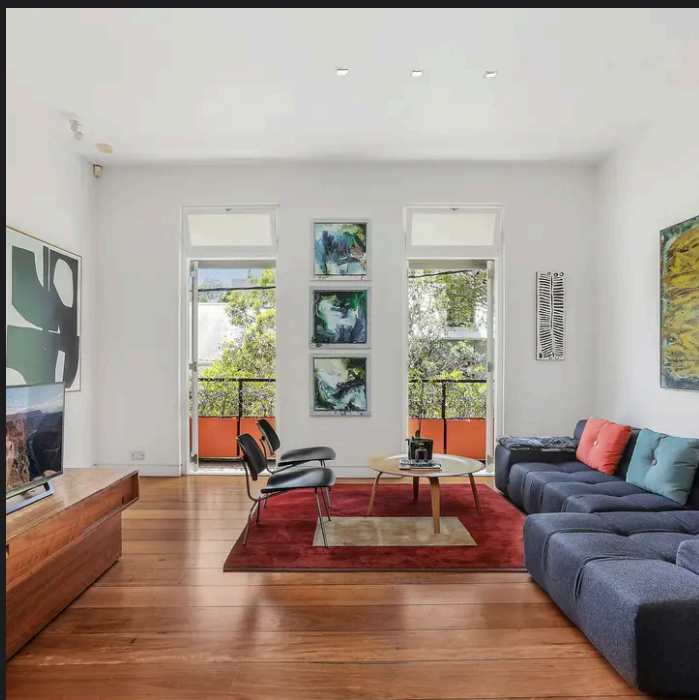
0 1 2 3 4 5
SCALE (METRES)

PLANS SHOWN ONLY INDICATIVE OF LAYOUT. DIMENSIONS ARE APPROXIMATE.
Ref. No: 92879

INT : 110m²

5 JESMOND STREET

SURRY HILLS



Charles Touma 0425 305 455
charles.touma@raywhite.com

Cadan Hickey 0404 206 240
cadan_hickey@raywhite.com

Disclaimer: All information provided is sourced from what we believe to be reliable sources. However, we do not guarantee its accuracy, and interested parties should conduct their own enquiries. Scale in metres. Indicative only. Dimensions are approximate.