

RayWhite®

TOUMA TAYLOR



**A Beautifully Renovated Dual Level Family
Sanctuary**

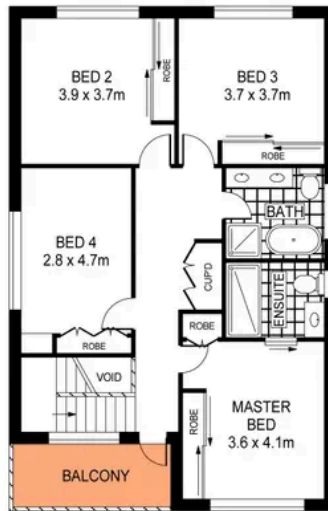
5 Metcalfe Street, Maroubra

4 bed 2 bath 2 car

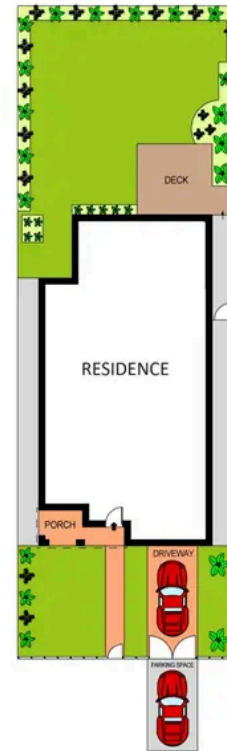
Sold



GROUND LEVEL



LEVEL ONE



SITE PLAN
(NOT TO SCALE)



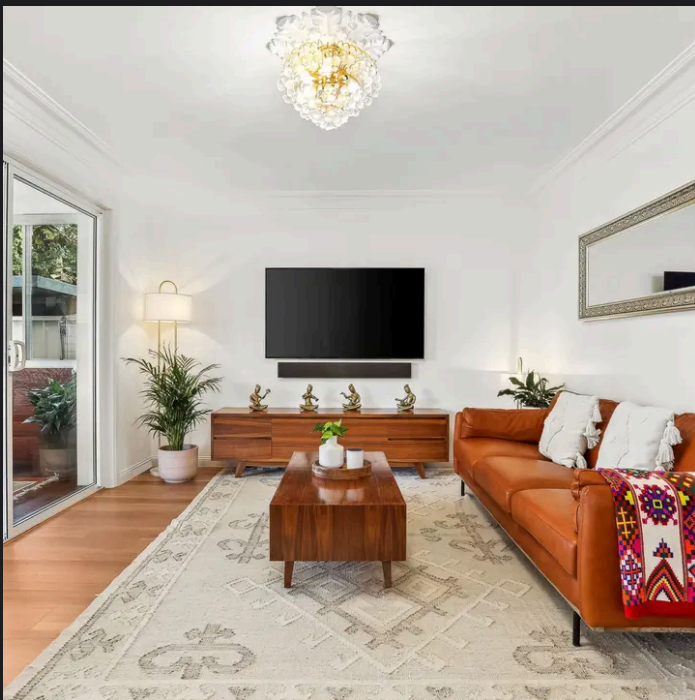
SCALE (METRES)

PLANS SHOWN ONLY INDICATIVE OF LAYOUT. DIMENSIONS ARE APPROXIMATE.
Ref. No. 109399

APPROX. INTERNAL AREA: 2225SQM

5 METCALFE STREET

MAROUBRA



Roger Wardy 0481 355 493
roger.wardy@raywhite.com

Disclaimer: All information provided is sourced from what we believe to be reliable sources. However, we do not guarantee its accuracy, and interested parties should conduct their own enquiries. Scale in metres. Indicative only. Dimensions are approximate.