

RayWhite®

TOUMA TAYLOR



**Renovated terrace with rare off-street
parking**

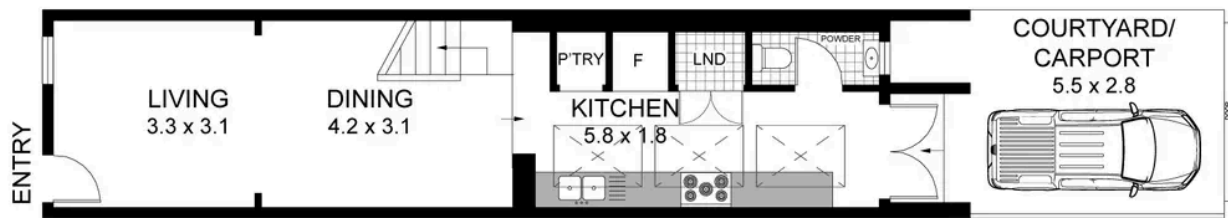
5 Mount Street, Redfern

2 bed 1 bath 1 car

Sold



FIRST FLOOR



GROUND FLOOR

5 MOUNT STREET REDFERN

2 Bedroom, 2 Bath, 1 Car

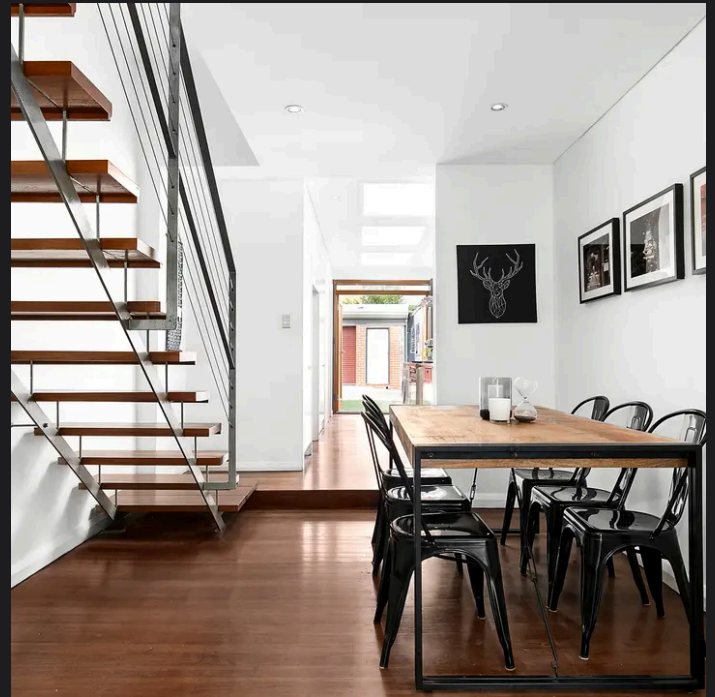
Internal area (approx.) 72sqm

External area (approx.) 19sqm

Land area (approx.) 63sqm



PLEASE NOTE: WHILST RAY WHITE TAKES EVERY CARE IN THE PURSUIT OF ACCURACY, THE PLAN IS SHOWN FOR GENERAL GUIDANCE ONLY. ALL AREAS, MEASUREMENTS AND DISTANCES ARE APPROXIMATE AND NOT TO SCALE. RAY WHITE AND OUR VENDOR WILL ACCEPT NO RESPONSIBILITY FOR ITS ACCURACY. INTERESTED PARTIES ARE ADVISED TO MAKE THEIR OWN INDEPENDENT ENQUIRIES.



Charles Touma 0425 305 455
charles.touma@raywhite.com

Max Klimenko 0425 336 555
max.klimenko@raywhite.com

Disclaimer: All information provided is sourced from what we believe to be reliable sources. However, we do not guarantee its accuracy, and interested parties should conduct their own enquiries. Scale in metres. Indicative only. Dimensions are approximate.