

RayWhite®

TOUMA TAYLOR

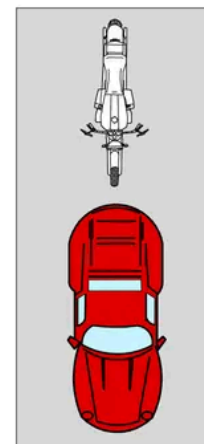


**Vibrant Two-Bedroom Apartment in
Elevated Position of Serenity**

500/83-93 Dalmeny Avenue, Rosebery

2 bed 2 bath 1 car

Sold



**SECURE
PARKING**
3.3 x 7.4m

LEVEL FOUR

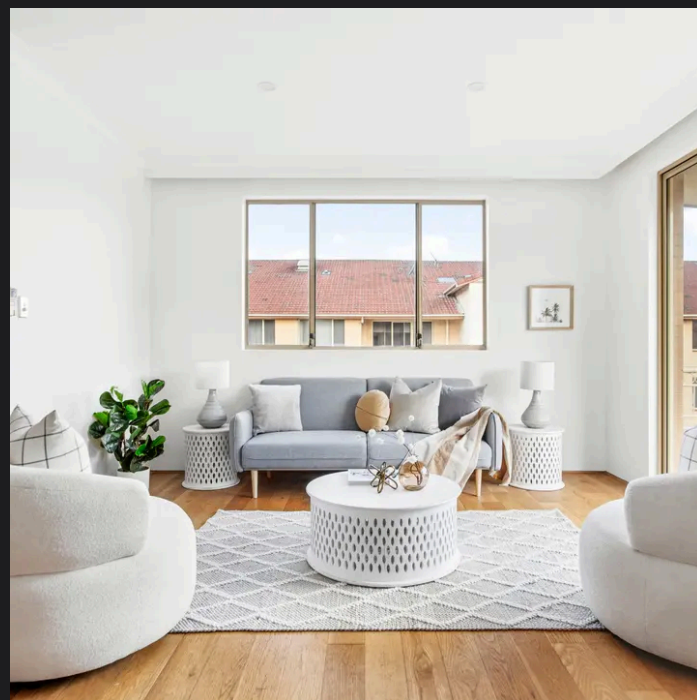
0 1 2 3 4 5
SCALE (METRES)

PLANS SHOWN ONLY INDICATIVE OF LAYOUT. DIMENSIONS ARE APPROXIMATE.
Ref. No: 04917



500/83-93 DALMENY AVENUE

ROSEBERY



Max Klimenko 0425 336 555
max.klimenko@raywhite.com

Dylan Corelli 0458 711 577
dylan.corelli@raywhite.com

Disclaimer: All information provided is sourced from what we believe to be reliable sources. However, we do not guarantee its accuracy, and interested parties should conduct their own enquiries. Scale in metres. Indicative only. Dimensions are approximate.