

RayWhite®

TOUMA TAYLOR

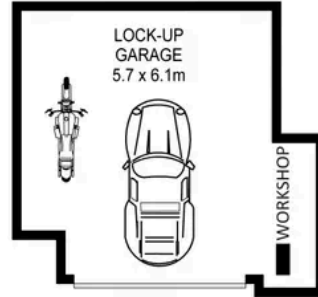
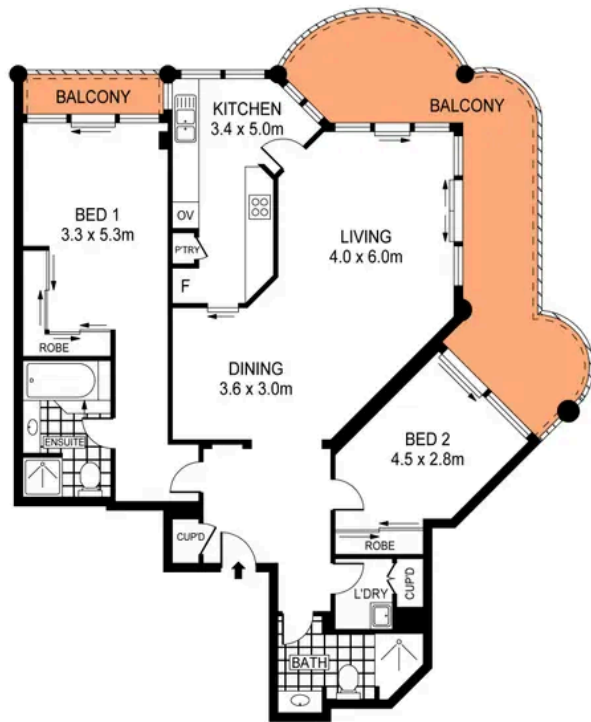


**Spectacular North Facing Apartment with
Breathtaking Outlook**

501/7 Black Lion Place, Kensington

2 bed 2 bath 1 car

Sold



0 1 2 3 4 5
SCALE (METRES)

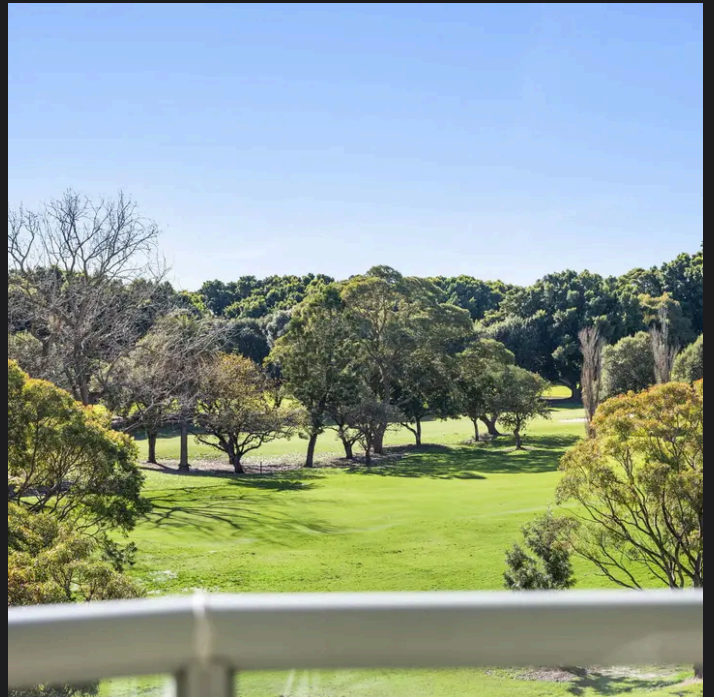
PLANS SHOWN ONLY INDICATIVE OF LAYOUT. DIMENSIONS ARE APPROXIMATE.
Ref. No. 00262

APPROX. INTERNAL AREA : 126m²
APPROX. TOTAL AREA : 170m²



501/7 BLACK LION PLACE

KENSINGTON



Roger Wardy 0481 355 493
roger.wardy@raywhite.com

Disclaimer: All information provided is sourced from what we believe to be reliable sources. However, we do not guarantee its accuracy, and interested parties should conduct their own enquiries. Scale in metres. Indicative only. Dimensions are approximate.