

# **RayWhite®**

TOUMA TAYLOR

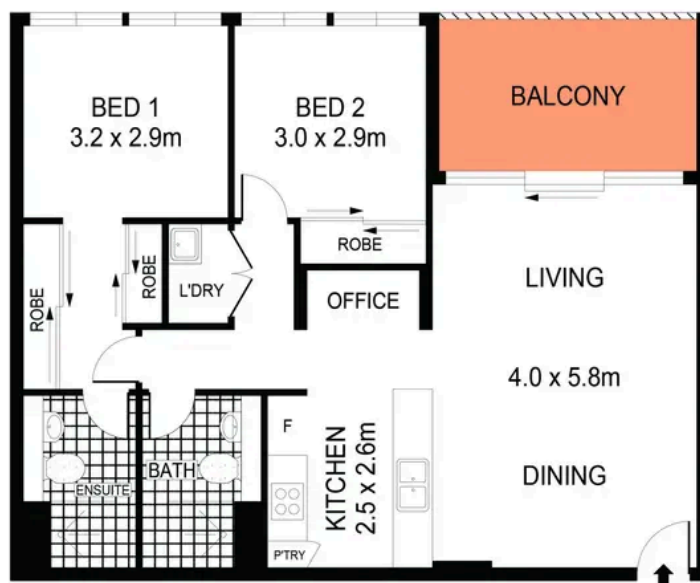


**Stylish Urban Haven in Rosebery's  
Acclaimed Complex**

502D/14J Mentmore Avenue, Rosebery

2 bed 2 bath 1 car

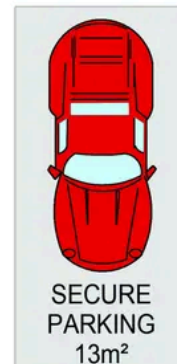
**Sold**



**LEVEL 5**



**STORAGE CAGE**



**SECURE PARKING**  
13m²

**BASEMENT LEVEL**

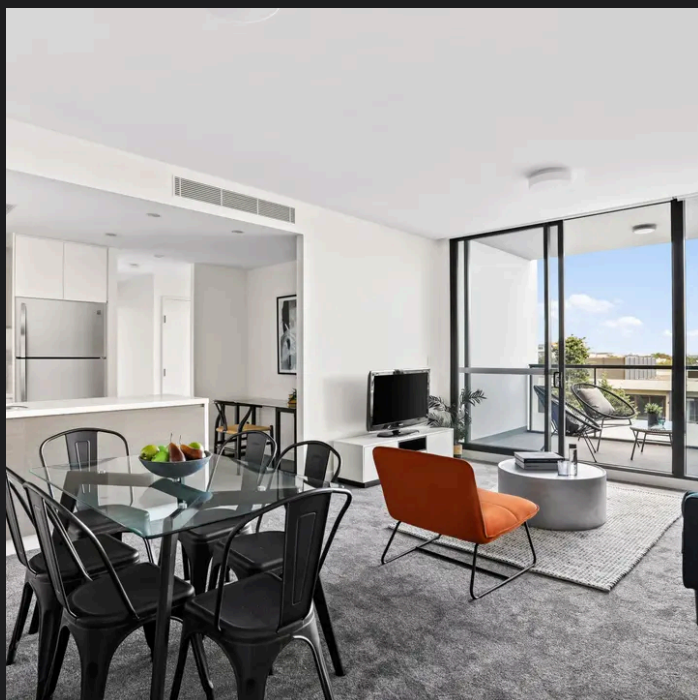


PLANS SHOWN ONLY INDICATIVE OF LAYOUT. DIMENSIONS ARE APPROXIMATE.  
Ref. No: 107542



502D/14J MENTMORE AVENUE

ROSEBERY



**Max Klimenko 0425 336 555**  
max.klimenko@raywhite.com

**Disclaimer:** All information provided is sourced from what we believe to be reliable sources. However, we do not guarantee its accuracy, and interested parties should conduct their own enquiries. Scale in metres. Indicative only. Dimensions are approximate.