

RayWhite®

TOUMA TAYLOR

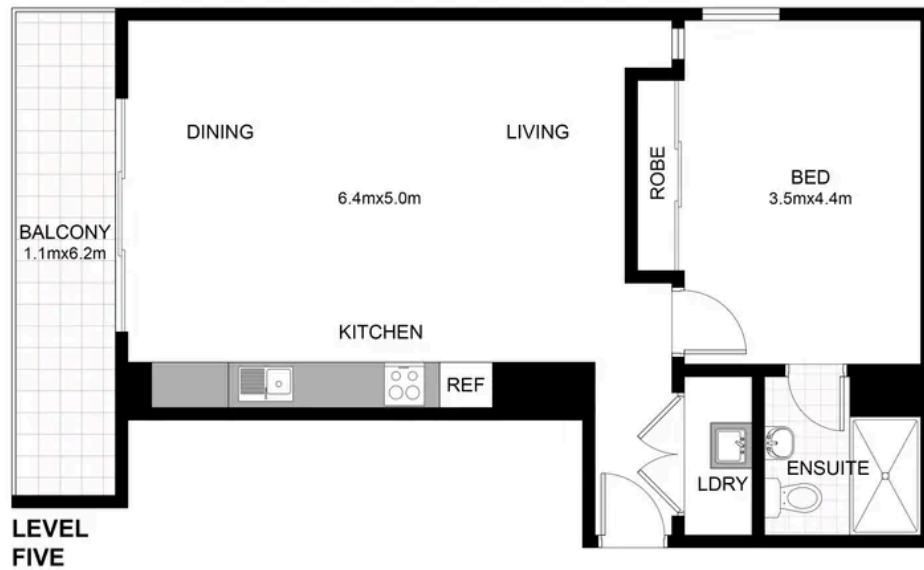


Elevated north-facing home with views

503/6 Short Street, Surry Hills

1 bed 1 bath

Sold

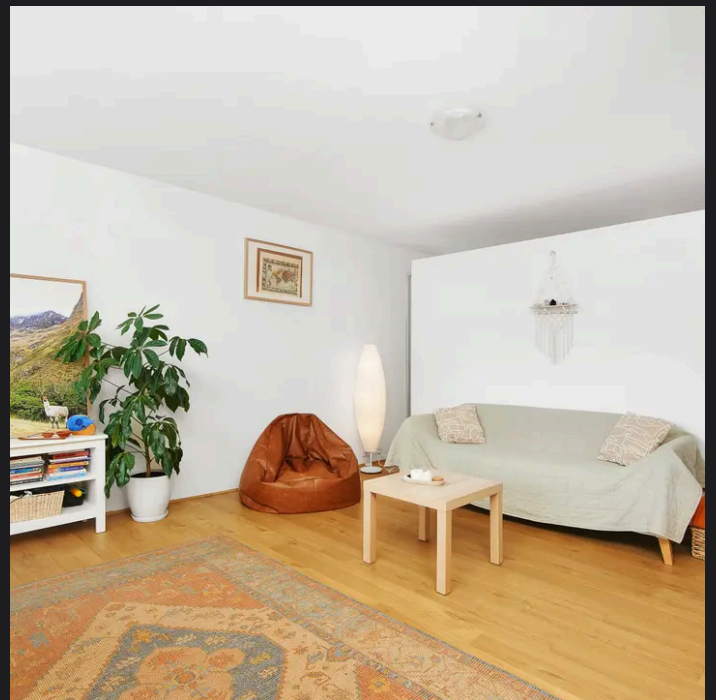
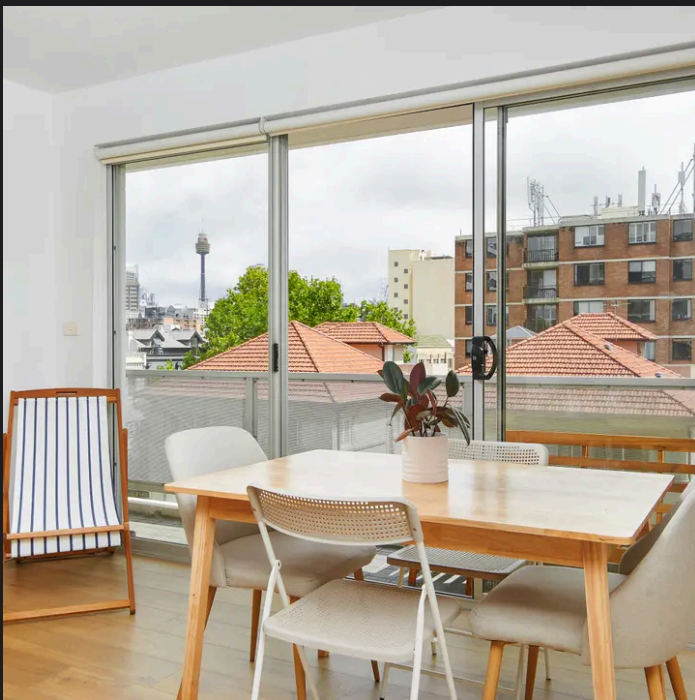


503/6 SHORT STREET,
SURRY HILLS

RAY WHITE TAYLOR & PARTNERS

PLEASE NOTE: WHILST RAY WHITE TAKES EVERY CARE IN THE PURSUIT OF ACCURACY, THE PLAN IS SHOWN FOR GENERAL GUIDANCE ONLY. ALL AREAS, MEASUREMENTS AND DISTANCES ARE APPROXIMATE AND NOT SCALE. RAY WHITE AND OUR VENDOR WILL ACCEPT NO RESPONSIBILITY FOR ITS ACCURACY. INTERESTED PARTIES ARE ADVISED TO MAKE THEIR OWN INDEPENDENT ENQUIRIES.

1 Bedroom, 1 Bathroom



Walter Burfitt-Williams 0402 833 566
walter.bw@raywhite.com

Annie Hodgson 0408 634 276
annie.hodgson@raywhite.com

Disclaimer: All information provided is sourced from what we believe to be reliable sources. However, we do not guarantee its accuracy, and interested parties should conduct their own enquiries. Scale in metres. Indicative only. Dimensions are approximate.