

RayWhite®

TOUMA TAYLOR

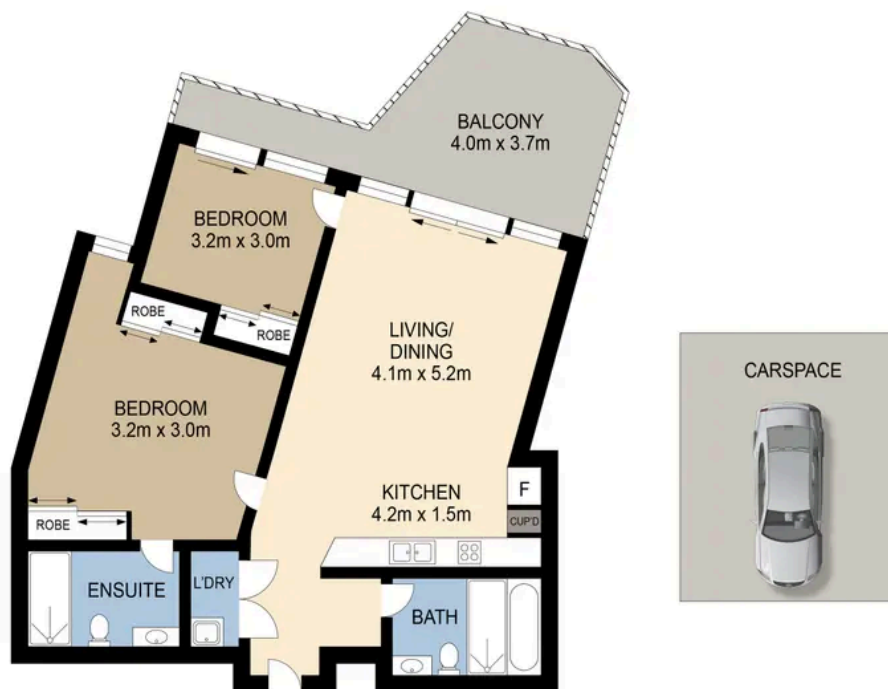


**Superb Modern Lifestyle Retreat in the
Vibrant Heart Of Redfern**

506/7-9 Gibbons Street, Redfern

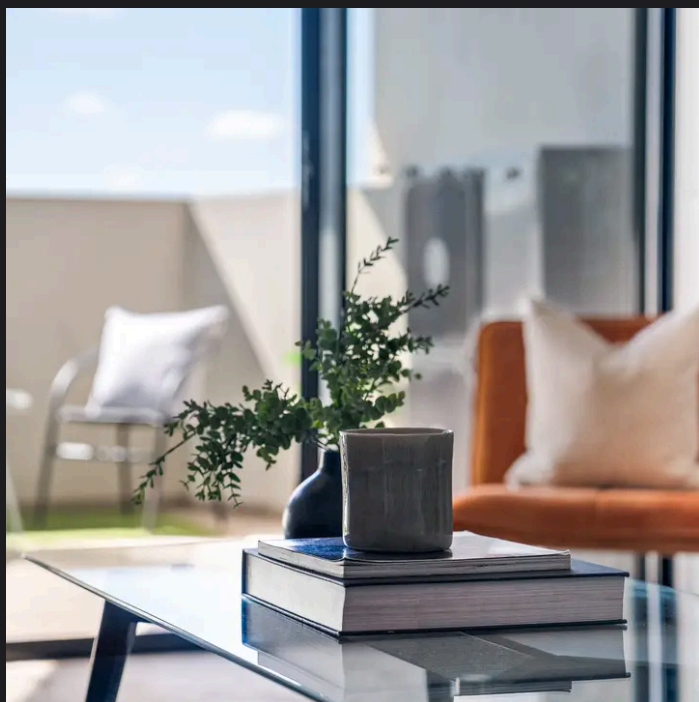
2 bed 2 bath 1 car

Sold



Unit 506/7-9 Gibbons St, Redfern

DISCLAIMER:
PLANS SHOWN ARE FOR MARKETING PURPOSES ONLY, ALL DIMENSIONS ARE APPROXIMATE AND NOT TO SCALE, THEY ARE SUBJECT TO ERRORS AND INACCURACIES AND NO LIABILITY WILL BE ACCEPTED. INTERESTED PARTIES SHOULD MAKE THEIR OWN INQUIRIES.



Hayden Richards 0414 872 784
hayden.richards@raywhite.com

Disclaimer: All information provided is sourced from what we believe to be reliable sources. However, we do not guarantee its accuracy, and interested parties should conduct their own enquiries. Scale in metres. Indicative only. Dimensions are approximate.