

RayWhite[®]

TOUMA TAYLOR

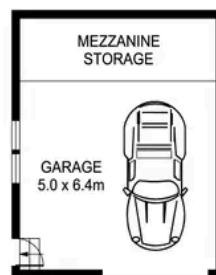
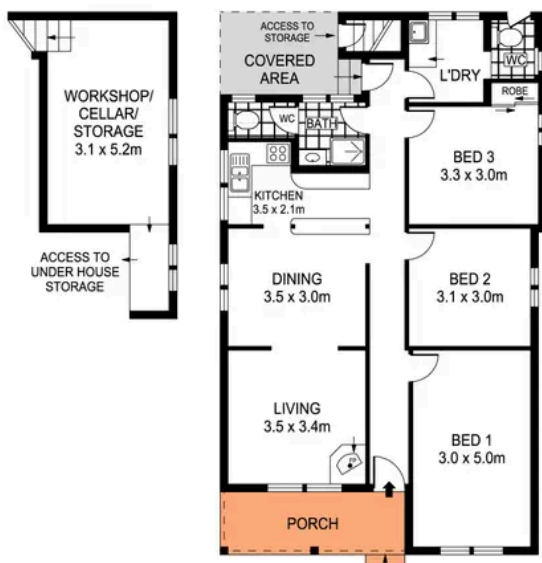


**Elevated Family Home, First Time Offered
in Decades**

51 Rainbow Street, Kingsford

3 bed 2 bath 1 car

Sold



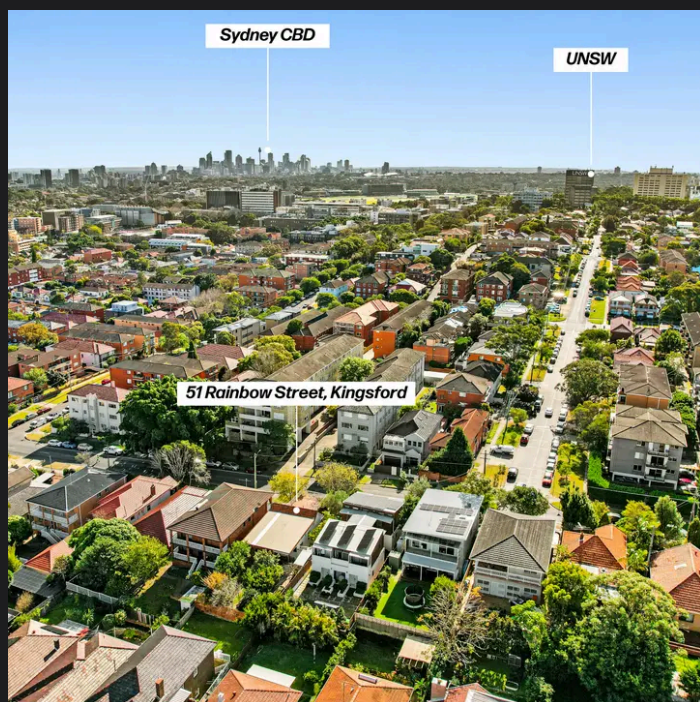
0 1 2 3 4 5
SCALE (METRES)

PLANS SHOWN ONLY INDICATIVE OF LAYOUT. DIMENSIONS ARE APPROXIMATE.
Ref. No: 104332



51 RAINBOW STREET

KINGSFORD



Roger Wardy 0481 355 493
roger.wardy@raywhite.com

Disclaimer: All information provided is sourced from what we believe to be reliable sources. However, we do not guarantee its accuracy, and interested parties should conduct their own enquiries. Scale in metres. Indicative only. Dimensions are approximate.