

RayWhite®

TOUMA TAYLOR

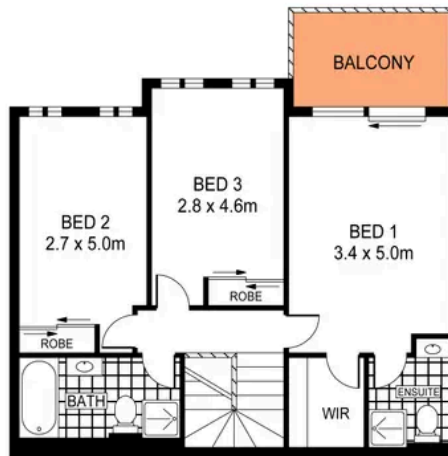
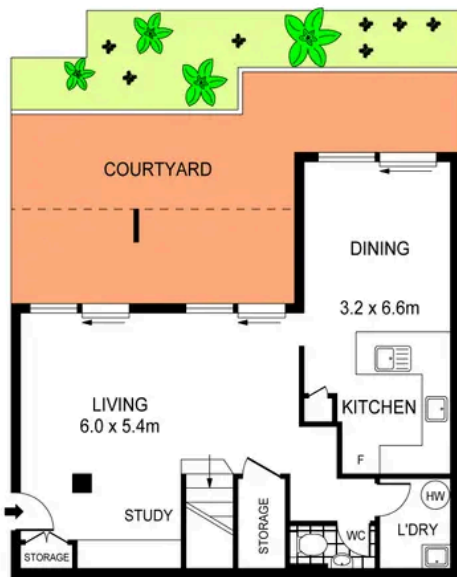


**Stylish Dual-Level Garden Apartment in
Prized Secure Complex**

5/11 Maddison Street, Redfern

3 bed 2 bath 1 car

Sold



PLANS SHOWN ONLY INDICATIVE OF LAYOUT. DIMENSIONS ARE APPROXIMATE.
Ref. No: 103600



5/11 MADDISON STREET

REDFERN



Charles Touma 0425 305 455
charles.touma@raywhite.com



Max Klimenko 0425 336 555
max.klimenko@raywhite.com

Disclaimer: All information provided is sourced from what we believe to be reliable sources. However, we do not guarantee its accuracy, and interested parties should conduct their own enquiries. Scale in metres. Indicative only. Dimensions are approximate.