

RayWhite[®]

TOUMA TAYLOR

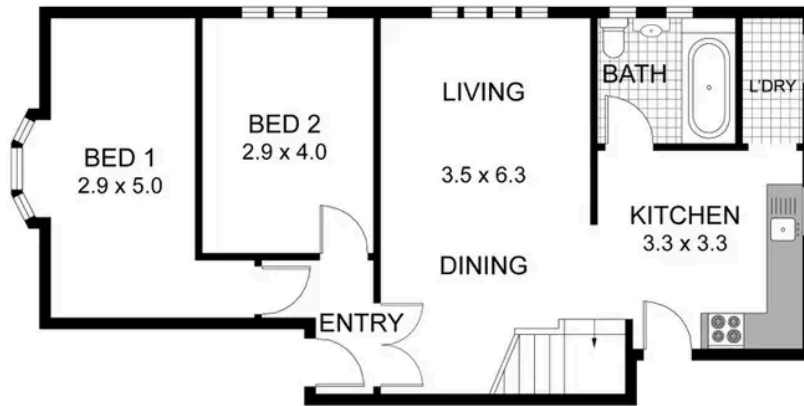
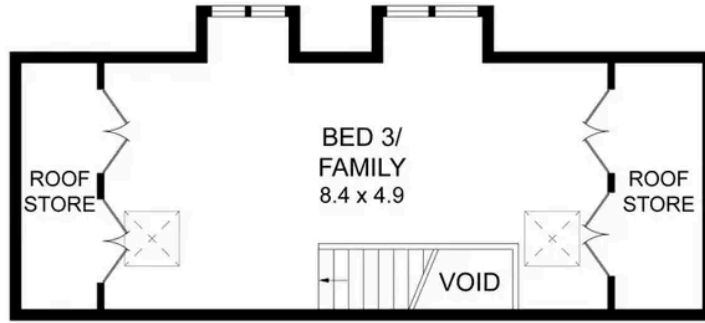


Top floor split-level apartment in sought-after location

5/21 Beach Road, Bondi Beach

3 bed 1 bath

Sold

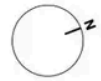


0 1 2 3 4

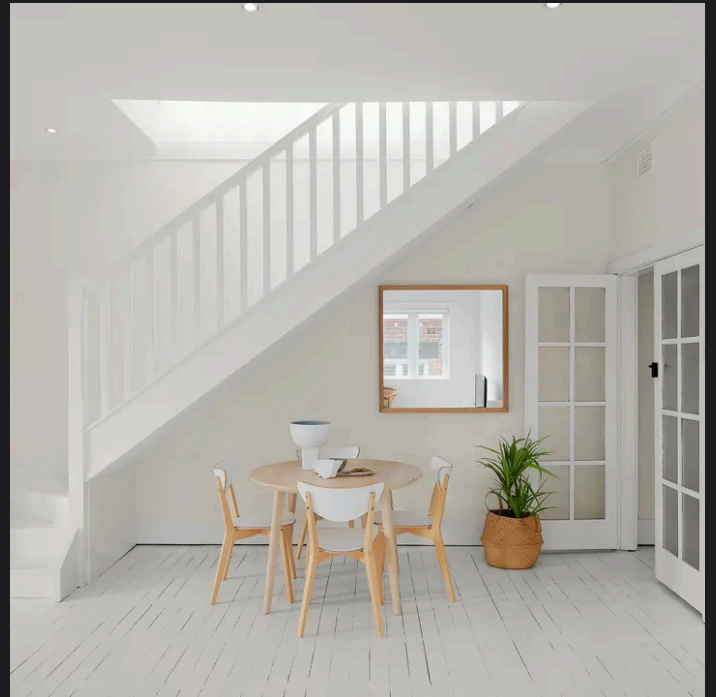
5/21 BEACH ROAD
BONDI

RAY WHITE TAYLOR & PARTNERS

3 Bedroom, 1 Bath



PLEASE NOTE: WHILST RAY WHITE TAKES EVERY CARE IN THE PURSUIT OF ACCURACY, THE PLAN IS SHOWN FOR GENERAL GUIDANCE ONLY. ALL AREAS, MEASUREMENTS AND DISTANCES ARE APPROXIMATE AND NOT TO SCALE. RAY WHITE AND OUR VENDOR WILL ACCEPT NO RESPONSIBILITY FOR ITS ACCURACY. INTERESTED PARTIES ARE ADVISED TO MAKE THEIR OWN INDEPENDENT ENQUIRIES.



Disclaimer: All information provided is sourced from what we believe to be reliable sources. However, we do not guarantee its accuracy, and interested parties should conduct their own enquiries. Scale in metres. Indicative only. Dimensions are approximate.