

RayWhite®

TOUMA TAYLOR

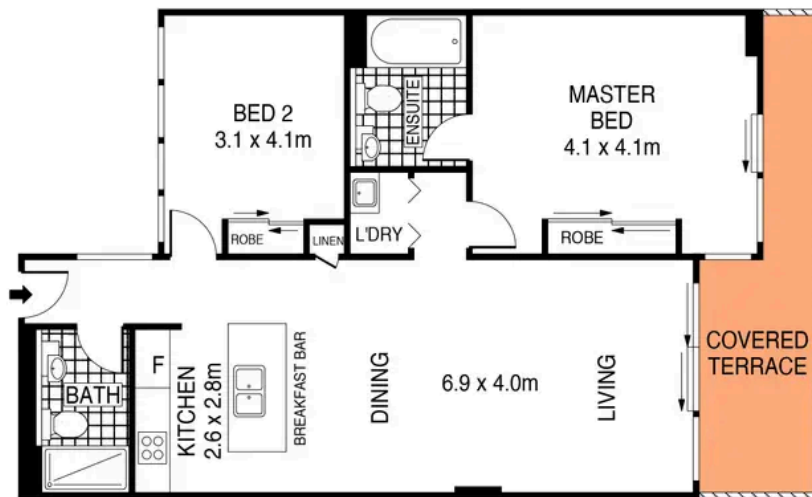


Premium Entertainer within Meriton's VSQ1

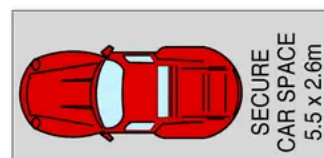
529/5 Defries Avenue, Zetland

2 bed 2 bath 1 car

Sold



LEVEL FIVE



LEVEL ONE



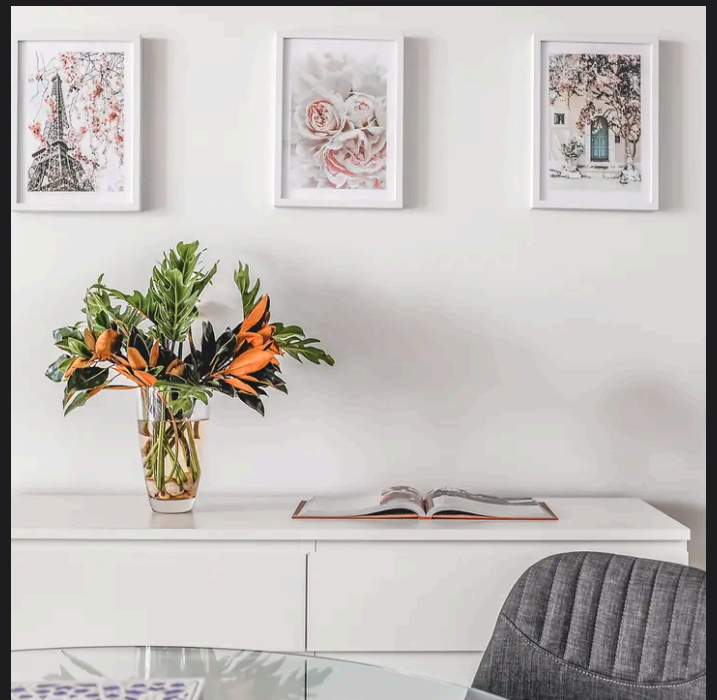
0 1 2 3 4 5
SCALE (METRES)

PLANS SHOWN ONLY INDICATIVE OF LAYOUT. DIMENSIONS ARE APPROXIMATE.
Ref. No: 95290



529/5 DEFRIES AVENUE

ZETLAND



Max Klimenko 0425 336 555
max.klimenko@raywhite.com

Disclaimer: All information provided is sourced from what we believe to be reliable sources. However, we do not guarantee its accuracy, and interested parties should conduct their own enquiries. Scale in metres. Indicative only. Dimensions are approximate.