

# RayWhite®

TOUMA TAYLOR

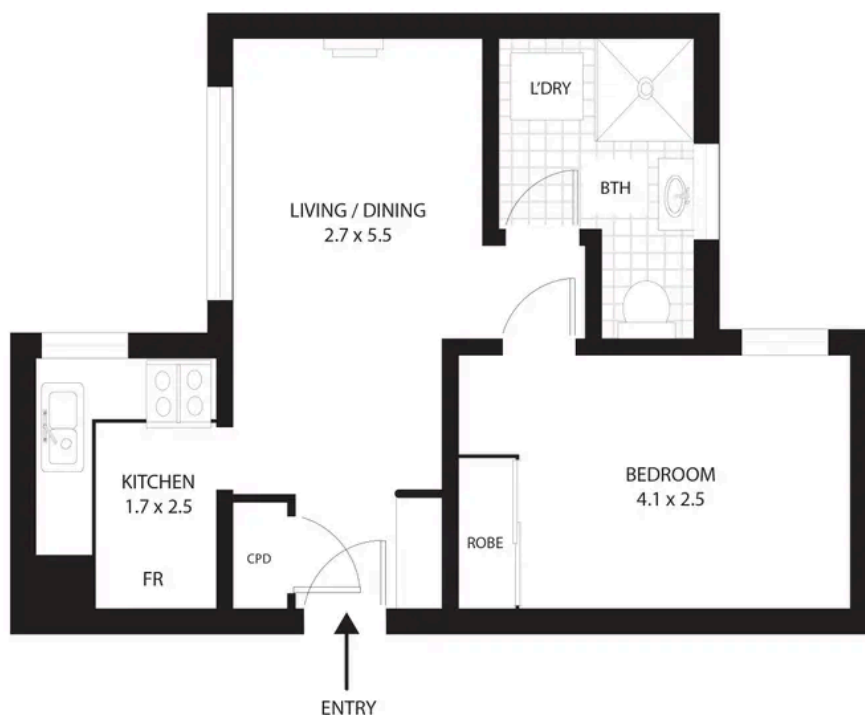


**Charming Art Deco One-Bedder in Prime  
Village Pocket Near Fitzroy Gardens**

5/3 Ward Avenue, Potts Point

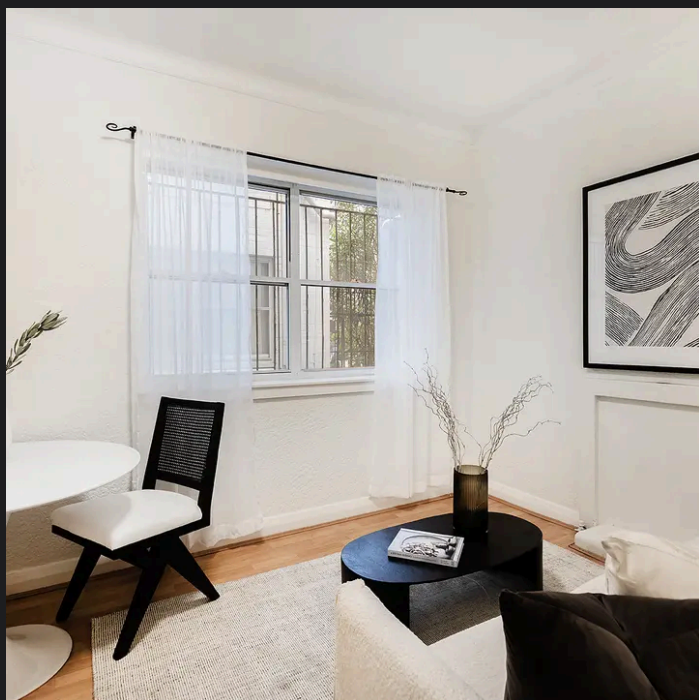
1 bed 1 bath

**Sold**



5/3 Ward Avenue, Potts Point

Whilst Ray White takes every care in the pursuit of accuracy, the plan is shown for general guidance only.  
All areas, measurements and distances are approximate and not to scale.  
Ray White and our vendor will accept no responsibility for its accuracy. Interested parties are advised to make their own enquiries.



**Renee Cross 0413 764 566**  
renee.cross@raywhite.com

**Nickolas Voloshanskyi**  
nickolas.voloshanskyi@raywhite.com