

RayWhite®

TOUMA TAYLOR

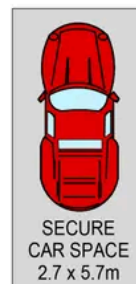
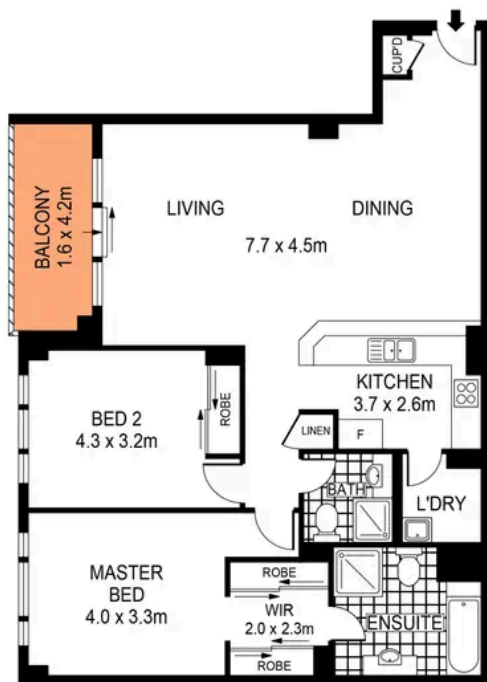


Spacious, Sunlit Apartment in Kimberley Estate

546/83-93 Dalmeny Avenue, Rosebery

2 bed 2 bath 1 car

Sold



GROUND LEVEL

LEVEL THREE

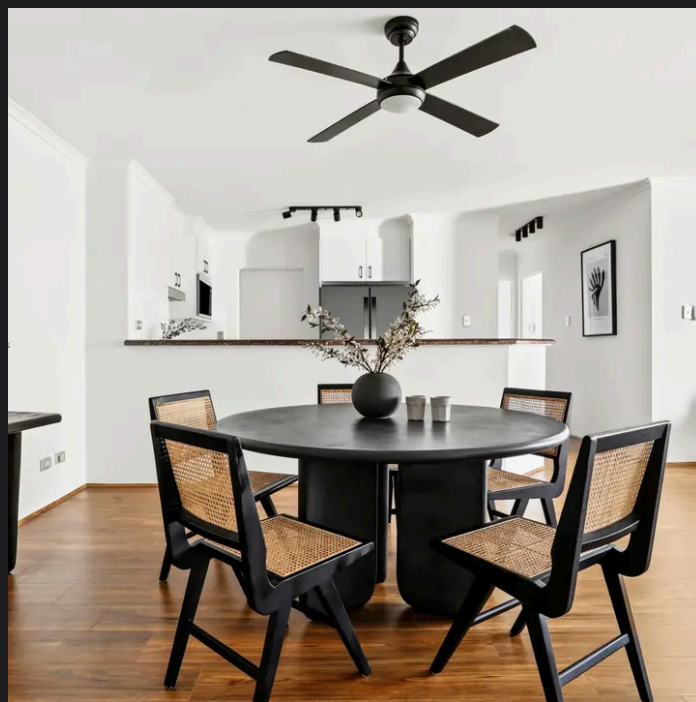


PLANS SHOWN ONLY INDICATIVE OF LAYOUT. DIMENSIONS ARE APPROXIMATE.
Ref. No: 05580



546/83-93 DALMENY AVENUE

ROSEBERY



Max Klimenko 0425 336 555
max.klimenko@raywhite.com

Dylan Corelli 0458 711 577
dylan.corelli@raywhite.com

Disclaimer: All information provided is sourced from what we believe to be reliable sources. However, we do not guarantee its accuracy, and interested parties should conduct their own enquiries. Scale in metres. Indicative only. Dimensions are approximate.