

# RayWhite®

TOUMA TAYLOR



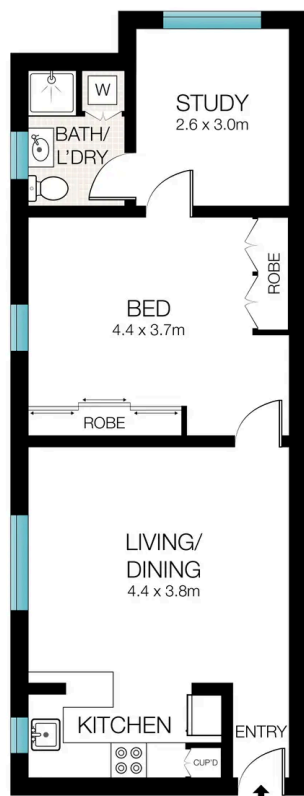
**Modernised one bedroom with generous  
floorplan**

5/68 Plowman Street, North Bondi

1 bed 1 bath

**Sold**

5/68 PLOWMAN STREET  
NORTH BONDI

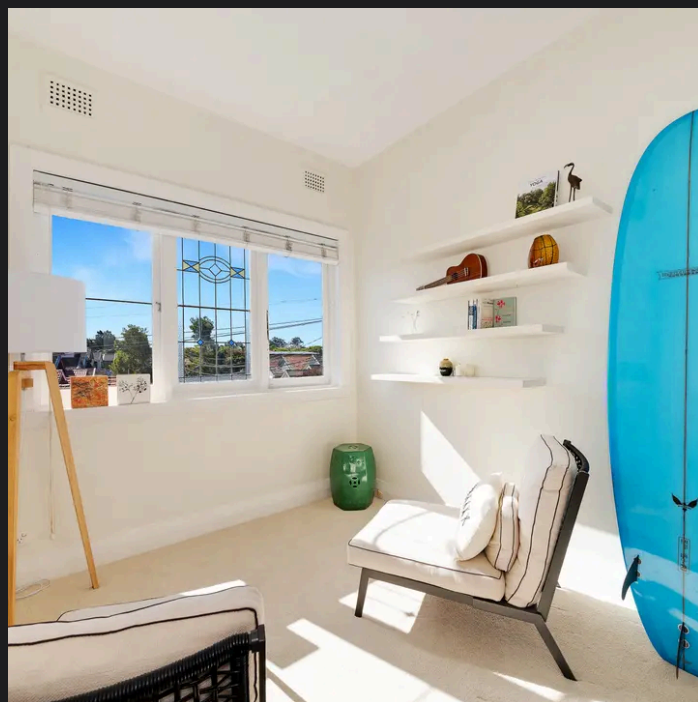
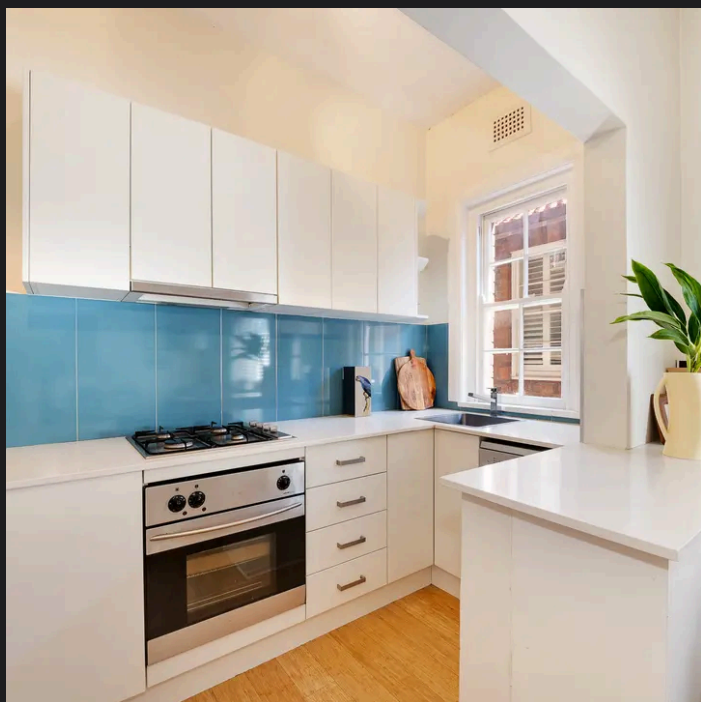


LEVEL ONE

RAY WHITE TAYLORJONES

All information contained herein is gathered from sources we believe to be reliable. However, we cannot guarantee it's accuracy and interested persons should rely on their own enquiries. Dimensions are approximate.

Approximate Areas:	
Internal Area:	56 sqm
Total:	56 sqm



**Disclaimer:** All information provided is sourced from what we believe to be reliable sources. However, we do not guarantee its accuracy, and interested parties should conduct their own enquiries. Scale in metres. Indicative only. Dimensions are approximate.