

# RayWhite®

TOUMA TAYLOR

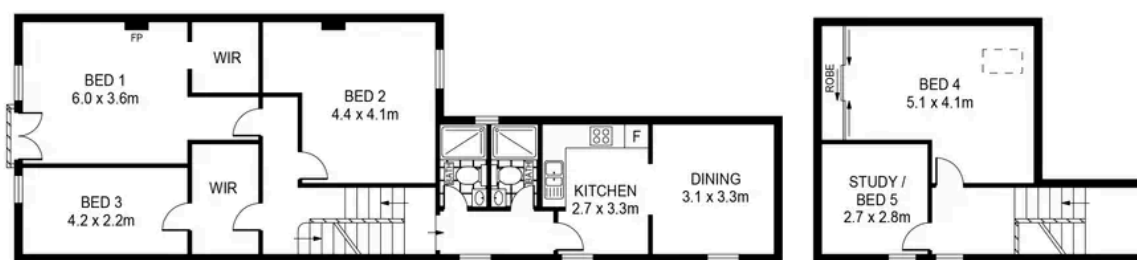


**Wonderful Character Home with  
Commercial Potential**

573A Elizabeth Street, Redfern

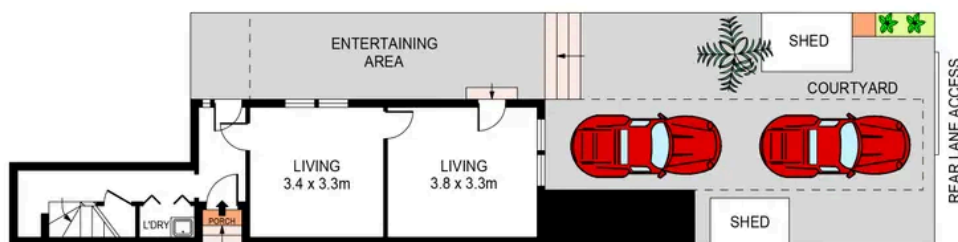
5 bed 2 bath 2 car

**Sold**



FIRST FLOOR

SECOND FLOOR



JAMES STREET ENTRY

GROUND FLOOR

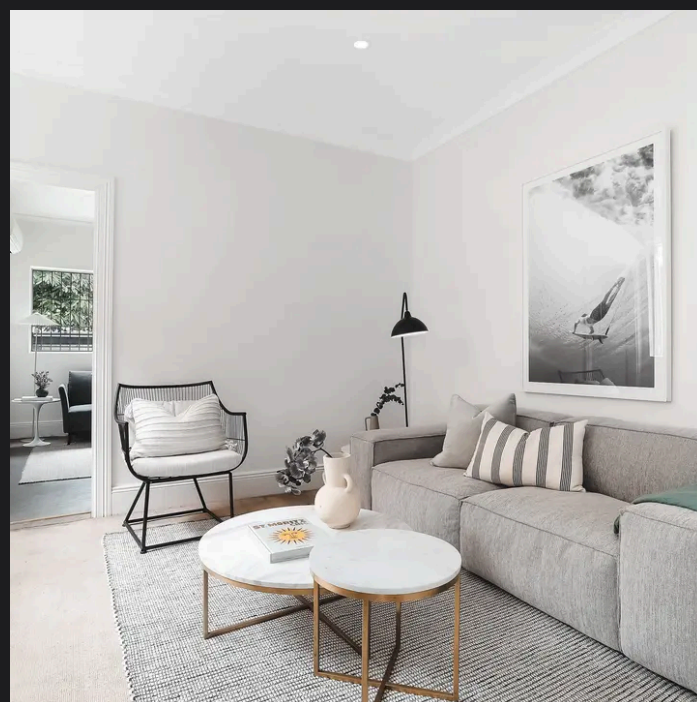
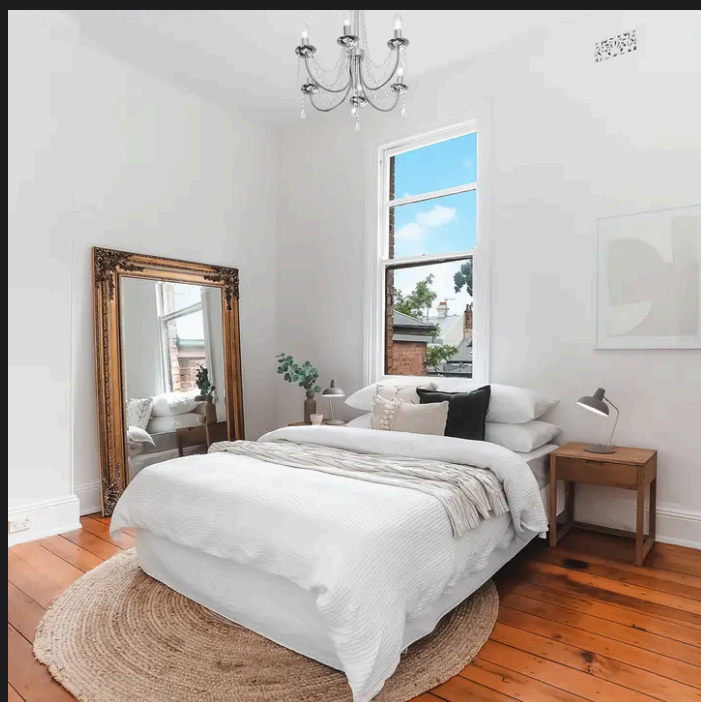
0 1 2 3 4 5  
SCALE (METRES)

PLANS SHOWN ONLY INDICATIVE OF LAYOUT. DIMENSIONS ARE APPROXIMATE.  
Ref. No: 94072



573A ELIZABETH STREET

REDFERN



Con Fotas 0411 648 458  
con.fotas@raywhite.com

Max Klimenko 0425 336 555  
max.klimenko@raywhite.com

**Disclaimer:** All information provided is sourced from what we believe to be reliable sources. However, we do not guarantee its accuracy, and interested parties should conduct their own enquiries. Scale in metres. Indicative only. Dimensions are approximate.