

# **RayWhite®**

TOUMA TAYLOR

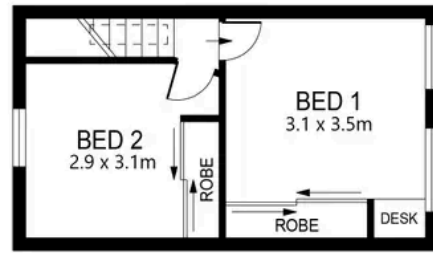


**Stylishly Renovated Terrace with  
Oversized Sun Soaked Deck**

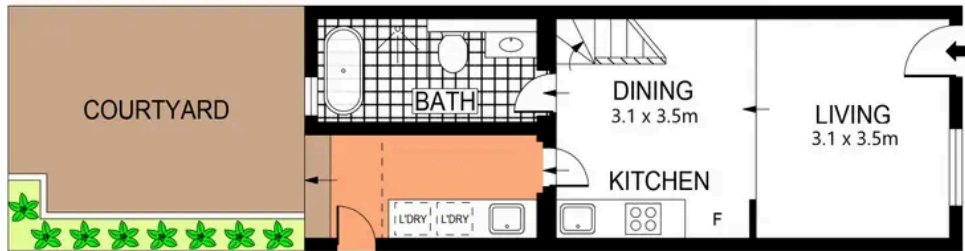
6 Goodmans Terrace, Surry Hills

2 bed 1 bath

**Sold**



LEVEL ONE



ENTRY LEVEL

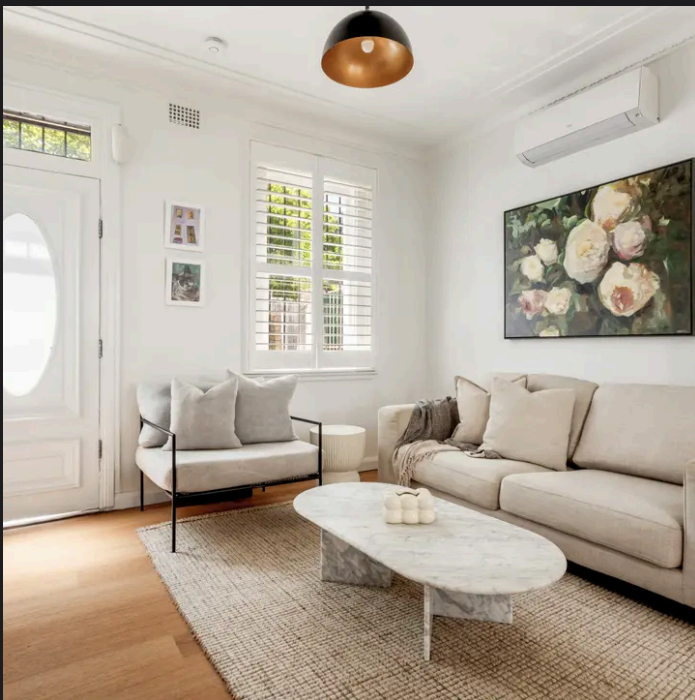


PLANS SHOWN ONLY INDICATIVE OF LAYOUT. DIMENSIONS ARE APPROXIMATE.  
Ref. No: 02665



6 GOODMAN'S TERRACE

SURRY HILLS



**Charles Tuma 0425 305 455**  
charles.tuma@raywhite.com

**Cadan Hickey 0404 206 240**  
cadan\_hickey@raywhite.com

**Disclaimer:** All information provided is sourced from what we believe to be reliable sources. However, we do not guarantee its accuracy, and interested parties should conduct their own enquiries. Scale in metres. Indicative only. Dimensions are approximate.